

## Training Expertise



## Production Expertise



## Development Expertise



## Technical Expertise



## Consulting Expertise



# Opening Tools Security Equipment Training Courses

## Catalogue



## Legal

### Contact

Karl-Heinz Volk  
Albersfelder Str. 8  
88213 Ravensburg-Oberzell  
Tel.: 0049-751-652738-10  
Fax.: 0049-751-652738-30  
Mobile: 0049-171-2621784  
E-Mail: [mail@volk-sicherheitstechnik.de](mailto:mail@volk-sicherheitstechnik.de)  
[www.volk-sicherheitstechnik.de](http://www.volk-sicherheitstechnik.de)

### Business hours

Monday - Friday: 8:00am - 12:30pm  
1:30pm - 5:00pm

### Copyright

No part of this catalogue may be reproduced or published in any form or by any means without prior permission from the copyright owner.

## About us

We are a family-run company specializing in locksmith equipment with many years of experience in the rapid opening of closed and locked doors and windows.

Our company works closely with insurance companies and manufacturers of locks and fittings. We also maintain close ties with various professional trade associations for the metal, glass, wood and plastics industries.

We train fire brigades, federal police, military and special forces, locksmiths, metal construction companies, carpentries, housing associations and janitorial services in our specialized training courses.

The techniques we teach, and the tools we use are both practical and applicable - a large proportion of them are our own developments and productions. Our products are distributed successfully by all well-known tool dealers in Germany.

With our tools and entry procedures for windows and doors, we will help you reach your goal easily, quickly and safely.

***Our Concept:***

***With a few tools achieve maximum results!***

## Price

**\*Prices quoted in this catalogue are net prices.\***

**\*Prices subject to change\***

**\*Current prices at [www.volk-sicherheitstechnik.de](http://www.volk-sicherheitstechnik.de)\*\***

## Product images

**\*Images may differ from the original\***

## Guide to

Unlocked Doors.....	6
Defective Locks.....	24
Lock Installation.....	26
Security Products.....	28
Cylinder Pinning.....	30
Locked Doors.....	31
Windows.....	45
Windows Glass-Cutting Products.....	48
Broken Keys.....	51
Lock Picking Tools.....	52
Electric Lock Picking Tools.....	59
Bump Keys and Tools.....	61
Safe Opening Tools.....	63
Milwaukee Machines and Accessories 235 V.....	65
Milwaukee Machines and Accessories 12V.....	66
Milwaukee Machines and Accessories 18V.....	68
Equipment and Accessories.....	75
Opening Tool Sets.....	76
Literature.....	87
Universal Tools and Working Material.....	88
Cylinders.....	95
Automotive Door Opener.....	96
Automotive Cylinder Opener .....	99
Fire Brigade Supplies.....	101
Training Accessories.....	103
Training Courses.....	106
Payment/Shipping.....	108

## Unlocked Doors



### Door Lever

Always required for double rebate doors, but sometimes also needed for single rebate doors, the lever can be inserted at the bottom part of the door leaf to quickly create a gap without damage in order to insert the opening tools.

Art. Nr. KV1003



### Door Latch Pick Needle

The latch opening needle is inserted between the door leaf and door frame below the latch and then pulled upwards. One side is designed for a standard single rebate door, the other for metal and plastic doors with a latch located further back.

Ø 1.5mm	Art. Nr. KV3090
Ø 1.7mm	Art. Nr. KV1002
Set Ø1.5mm + Ø1.7mm	Art. Nr. KV3090-S

### Straight Spring Steel Wire

Ø 1.5mm, 250mm long	Art. Nr. KV1063
Ø 1.7mm, 250mm long	Art. Nr. KV1062
Ø 1.5mm, 333mm long	Art. Nr. KV1063-333
Ø 1.7mm, 333mm long	Art. Nr. KV1062-333



### Roll of Spring Steel Wire for Custom Latch Pick Needle

Ø 1.5mm, 36m total length	Art. Nr. KV1040
Ø 1.7mm, 28m total length	Art. Nr. KV1021



### Spring Steel Wire Container

Stainless Steel, 310mm long, 35mm Ø, 2 chambers. Ideal storage case with non-losable rubber stopper.

Art. Nr. KV2032



## Unlocked Doors



### Spring Steel Wire Container

Stainless steel, 310mm long, 35mm Ø, 2 chambers with 10 spring steel wires each 1.5 and 1.7 mm Ø, 250mm long. Ideal storage container for customized adaptation of latch pick needles for non-standard rebate doors. With non-losable rubber stopper.

Art. Nr. KV1083



### Spare Needle Container

310mm long, 35mm Ø, stable stainless steel, 2 chambers with 5 straight spare needles each: Ø 1.5 mm and Ø 1.7 mm. Wires are pre-looped and can be inserted into our handles. With non-losable rubber stopper.

Art. Nr. KV2027



### Latch Opener - Single Rebate with Handle

The latch opener is inserted between the door leaf and door frame below the latch and then pulled upwards. The handle makes it much easier to use.

Ø 1.5mm (white handle) Art. Nr. KV2025-1,5  
 Ø 1.7mm (black handle) Art. Nr. KV2025-1,7  
 Set (Ø 1.7mm + Ø 1.5mm) Art. Nr. KV2006

### Latch Opener - Standard Double Rebate with Handle

The latch opener is inserted between the door leaf and door frame below the latch and then pulled upwards. Possible use for double rebate doors. The handle makes it possible to twist the opener and so make it much easier to open the door.

Ø 1.5mm (white Handle) Art. Nr. KV1016-1,5  
 Ø 1.7mm (black handle) Art. Nr. KV1016-1,7  
 Set (Ø 1.7mm + Ø 1.5mm) Art. Nr. KV1060



High quality, in-house production

## Unlocked Doors



### Latch Opener - Double Rebate Window Rebate with Handle

The latch opener is inserted between the door leaf and door frame below the latch and then pulled upwards. The handle makes it much easier to use. For use with double rebated doors with wooden frames. Ø 1.7mm

Art. Nr. KV3121



### Latch Opener - Biffar with Handle

Special design for plastic and metal doors with very low latch. Ø 1.7 mm

Art. Nr. KV2094



### Latch Opener - Straight with Handle

Allows for custom-bending for non-standard folds

Ø 1.5 mm Art. Nr. KV2022-1,5  
 Ø 1.7 mm Art. Nr. KV2020-1,7



### Latch Opener Set- Standard Double Rebate + Window Rebate with Handle

Latch Opener Standard Double Rebate Ø 1.7 mm +  
 Latch Opener Double Rebate - Window Ø 1,7mm

Art. Nr. KV3122



### Latch Opener Set- Standard Double Rebate + Single Rebate with Handle

Latch Opener Standard Double Rebate Ø 1.7 mm +  
 Latch Opener - Single Rebate Ø 1.7 mm

Art. Nr. KV3123



High quality, in-house production

## Unlocked Doors



### Spare Latch Opening Needle Single Rebate



Ø 1.5 mm  
Ø 1.7 mm

Art. Nr. KV2042  
Art. Nr. KV2020



### Spare Latch Opening Needle Standard Double Rebate



Ø 1.5 mm  
Ø 1.7 mm

Art. Nr. KV2021  
Art. Nr. KV2041



### Spare Latch Opening Needle Double Rebate - Window Rebate



Ø 1.7 mm

Art. Nr. KV3121-E



### Spare Latch Opening Needle Biffar



Ø 1.7 mm

Art. Nr. KV2094-E



### Spare Latch Opening Needle Straight

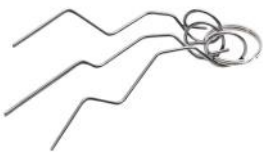


Ø 1.5mm  
Ø 1.7 mm

Art. Nr. KV2023  
Art. Nr. KV2043



### Latch Opening Needle Set - Single Rebate



The Latch Opening -Needle Set for single rebate doors offers everything a key emergency service practitioner-needs for single rebate bypass lock entry in the smallest of spaces. The set contains 3 different opening needles in 1.7mm spring steel wire:

1. Single Rebate Needle Standard
2. Single Rebate Needle for Aluminium-/Plastic Doors
3. Fire Door/Steel Frame

Art. Nr. KV2090



High quality, in-house production

## Unlocked Doors



### Compact Latch Opening Needle Set - Mini Wallet



practical opening set for on the go. Single rebated door set for your pocket.

Dimensions approx. 120 x 85mm

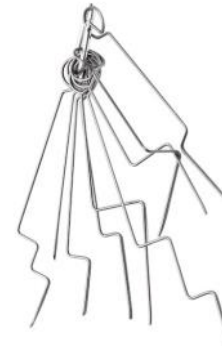
Black miniature wallet made of soft genuine leather

Art. Nr. KV3001

Mini Wallet single Art.Nr. KV3001-B



### Full Latch Opening Needle Set



The Full Latch -Opening Needle Set offers everything a key emergency service practitioner -needs for bypass lock entry in the smallest of spaces.

The set contains 9 different opening needles in 1.7mm spring steel wire:

- 1.Double Rebate Needle Standard
- 2.Double Rebate Needle for Window Rebate
- 3.Single Rebate Needle Standard
- 4.Single Rebate Needle for Fire Doors
- 5.Single Rebate Needle for Metal Doors
- 6.Single Rebate Needle for Plastic Doors
- 7.Single Rebate Needle for Plastic/Metal -Doors
- 8.Single Rebate Needle for Panic Doors (opening outwards)
- 9.Spring wire for lock cylinder coupling and for dismantling BKS - round cylinders

Art. Nr. KV2083



### Combo: Door Lever + Latch Opener for Standard Double Rebate + Latch Opener for Window Rebate



Door -Lever: For creating a door gap without damage.  
Latch Opener Standard Double Rebate with Handle  
Ø 1.7 mm Latch Opener for Window Rebate with  
Handle Ø 1.7 mm

Art. Nr. KV3164



High quality, in-house production

## Unlocked Doors



### Combo: Door Lever + Latch Opener S/D - Set

Door Lever: Door lever: For creating a door gap without damage.

Single Rebate Latch Opener with Handle: Ø 1.7 mm

Double Rebate Latch Opener with Handle: Ø 1.7mm

Art. Nr. KV2044



### Latch Opening Card with Full Handle - Lengthwise

The well-known latch opening card with its ergonomically shaped handle protects your hands and improves your grip

Ø 0.35 mm (white handle) Art. Nr. KV1004-0,35

Ø 0.5 mm (black handle) Art. Nr. KV1004-0,5

Set Ø 0.35 mm + 0.5 mm Art. Nr. KV1004



### Latch Opening Card with Full Handle Narrow Side

The well-known latch opening card with its ergonomically shaped handle protects your hands and improves your grip

Ø 0.35 mm (white handle) Art. Nr. KV3031-0,35

Ø 0.5 mm (black handle) Art. Nr. KV3031-0,5

Set Ø 0.35 mm + 0.5 mm Art. Nr. KV3029



### Latch Opening Card with Half Handle Lengthwise

When the door knob prevents you from working comfortably, the narrow half handle combines power and manageability in an ideal way. We advise you to use the half handle.

Ø 0.35 mm (white handle) Art. Nr. KV1012-0,35

Ø 0.5 mm (black handle) Art. Nr. KV1012-0,5

Set Ø 0.35 mm + 0.5 mm Art. Nr. KV1012



High quality, in-house production

## Unlocked Doors



### Latch Opening Card with Half Handle - Narrow Side

When the door knob prevents you from working comfortably, the narrow half handle combines power and manageability in an ideal way. Attaching the handle to the narrow side is particularly useful for metal and plastic doors, as the lock latch is usually located further back. We advise you to use the half handle.

Ø 0.35 mm (white handle) Art. Nr. KV3030-0,35

Ø 0.5 mm (black handle) Art. Nr. KV3030-0,5

Set Ø 0.35 mm + 0.5 mm Art. Nr. KV3028



### Latch Opening Card for Emergency Doors

This card is not only suitable for emergency doors but for almost all doors that open outwards - regardless of the type of rebate. Due to its small diameter, even doors with very little rebate clearance can be opened.

Card with Handle Ø 0.5mm Art. Nr. KV3325



### Latch Opening Card - Set 0.25mm

5 Cards in Ø 0.25mm

Art. Nr. KV3239



### Latch Opening Card - Set 0.35 mm

5 Cards in Ø 0.35mm

Art. Nr. KV1031



### Latch Opening Card - Set 0.5 mm

5 Cards in Ø 0.5mm

Art. Nr. KV2031



High quality, in-house production



## Unlocked Doors



### Latch Opening Card - Set Mixed

3 Cards in Ø 0.35 mm  
2 Cards in Ø 0.5mm

Art. Nr. KV3061



### Latch Puller

This tool is suitable for almost all doors that open outwards, regardless of the rebate geometry. Due to its small diameter, even doors with very little rebate clearance can be opened. You can also reach latches that are situated a little "lower".

Art. Nr. KV3348

### Open-Up-Card

The "Open-Up" Card is the ideal solution for problematic door entries. We have developed it for doors with extremely little rebate clearance. Two opening methods are possible: The wedge-shaped cut of the card can be used to directly push the latch back to open the door. Or with the cable pull mechanism the card can be inserted horizontally allowing the latch to be pulled up and opened. Scratches and injuries to the frame and door leaf are ruled out. Different rebate geometries require different "Open-Up" Card designs.



### "Open-Up" Latch Card for Double Rebate

For standard single rebate doors and standard double rebate doors. The further refinement of our popular card with a flat strap.

Ø 0.35mm (white handle)	Art. Nr. KV1089
Ø 0.35mm (flat strap)	Art. Nr. KV1089-N
Ø 0.5mm (black handle)	Art. Nr. KV1088
Ø 0.5mm (flat strap)	Art. Nr. KV1088-N
Spare Card Ø0.35mm	Art. Nr. KV1090-0,35
Spare Card Ø0.5mm	Art. Nr. KV1090-0,5

Spare cards do not come with a handle.



### "Open-Up" Latch Card for Double Rebate Window Rebate

For blunt hinged doors, metal doors and double rebate doors with window rebate. Ø 0.5mm

Card	Art. Nr. KV1088-F
Flat Strap	Art. Nr. KV1088-FN
Spare Card	Art. Nr. KV1090-F

Spare cards do not come with a handle.

## Unlocked Doors



### "Open-Up" Latch Card Single Rebate 42mm

For plastic doors with a latch that lies at a distance from the door blade. Ø 0.5mm



Art. Nr. KV1088-42  
Spare Card Art. Nr. KV1090-42

Spare cards do not come with a handle.



### "Open-Up" Latch -Card Single Rebate 58mm

For plastic doors with a thermal break and a latch that lies at an even greater distance from the door blade. Ø 0.5mm



Art. Nr. KV1088-58  
Spare Card Art. Nr. KV1090-58

Spare cards do not come with a handle.



### Set: Door Lever + "Open-Up" Latch - Opening Card- Set



Door Lever:  
Door lever: For creating a door gap without damage.



"Open-Up" Latch -Opening Card:  
For single and double rebate doors with tight gaps between door and frame, as well as difficult to reach latches.

Art. Nr. KV2024

## Unlocked Doors



### 6 Latch Opening Cards - Full Set

We have developed an "Open-Up" - System with a systematized procedure according to card numbers that enables the opening of all suitable single and double rebate doors.

Check if the door is not locked.  
Determine whether it is a double rebate door.  
Open door with standard or window rebate profile.  
Open door with wooden frame, metal frame, plastic frame or door with thermal break.  
Open single or double rebate door with special size rebates.

With detailed, illustrated instructions and the assignment of rebate geometry > "Open Up" Latch - Card type. Single card with half handle

Art. Nr. KV3019

Supplied with:

"Open-Up" Card - Window Rebate Ø 0.5mm,  
"Open-Up" Card - Standard Ø 0.5mm,  
"Open-Up" Card 42mm Ø 0.5mm,  
"Open-Up" Card 58mm Ø 0.5mm  
Latch Opening Card with Half Handle  
Ø 0.35mm + 0.5mm



High quality, in-house production

15

## Unlocked Doors

### Spiral Opener

The easy-to-use opening tool for double and single rebate doors.

Blue: The large helix is used for standard / double rebate doors with steel frames. Required clearance at least 4mm Ø 1.7mm

Red: The narrow helix is used for double rebate doors with a window rebate. Ø 1.5mm



Spiral Opener Set (Set of 4) Art. Nr. KV1020  
Spiral Opener Blue single Art. Nr. KV1020-B  
Spiral Opener Blue 2-pcs Set Art. Nr. KV1020-B2  
Spiral Opener Red single Art. Nr. KV1020-R  
Spiral Opener Red 2-pcs Set Art. Nr. KV1020-R2



### Spiral Opener Extra Thin

The easy-to-use opening tool for double and single rebate doors. The large helix pitch (same as blue spiral) is used for standard/double rebate doors with steel frames. Suitable less rebate clearance than 4mm. Ø 1.25mm

Single  
Set 2

Art. Nr. KV1041  
Art. Nr. KV1041-2

### Door Spy Opener



The door spy is removed with the special pliers or a new door spy opening is drilled. The door handle can then be pressed down with the opening tool.

Art. Nr. KV1009

### Door Spy Pliers



Special pliers for removing an existing door spy from the outside.

Art. Nr. KV1043



High quality, in-house production

16



## Unlocked Doors



### Door Spy Scoop

If the Door Spy Opener has been set too short, in certain cases it may be impossible to remove the opener to extend it again. In this case, our in-house developed Door Spy Scoop can help to straighten the spy opener without having to bring it into a vertical position.

Art. Nr. KV3089



### Door Spy Replacement

With 3 extension parts and a cover plate.

Art. Nr. KV2057



### Drill Bit with Centring Tip for Wood

Drill bit to drill out door spy hole .

Art. Nr. KV1026



### Handle Catch

A real alternative to all other opening techniques with closed doors. It is used for barrier free doors, even Schalllex and Kältefeind doors. Can also be used in case of panic and self-locking locks. Inserted in the gap between door and floor, it is lifted up and adjusted over the door handle. The pull rope on the outside is then used to pull the handle down. A spare cord is located in the handle. We recommend the 3mm version as this version can be used with smaller gaps

Thickness 3mm

Art. Nr. KV1042-3

Thickness 4mm

Art. Nr. KV1042-4

Spare cord

Art. Nr. KV1042-S



High quality, in-house production

17

## Unlocked Doors



### Door Latch Spatula 20 mm

The ideal tool for closed but unlocked single rebate doors with difficult latches. Its polished edges and optimally calculated shape guarantee high success rates. Rebate length 20mm, Ø 0.6mm.

Art. Nr. KV1059



### Door Latch Spatula 35 mm

The ideal tool for closed but unlocked single rebate doors with difficult latches. Its polished edges and optimally calculated shape guarantee high success rates. Long version for latches located further back in plastic and metal doors. Rebate length 35mm, Ø 0.6mm.

Art. Nr. KV1092



### Door Latch Spatula 45 mm

The ideal tool for closed but unlocked single rebate doors with difficult latches. Its polished edges and optimally calculated shape guarantee high success rates. Long version for latches located very far back in plastic and metal doors. Rebate length 45mm. Do not use with wooden doors. Ø 0.6mm.

Art. Nr. KV2026



### Door Latch Spatula Set 35 mm + 45 mm

The ideal tool for closed but unlocked single rebate doors with difficult latches. Its polished edges and optimally calculated shape guarantee high success rates. Also for latches located further back in plastic and metal doors, Ø 0,6mm.

Art. Nr. KV3092



High quality, in-house production

18

## Unlocked Doors



### Door Latch Spatula Set (Set of 3)

The ideal tool for closed but unlocked single rebate doors with difficult latches. Its polished edges and optimally calculated shape guarantee high success rates. The set also covers plastic and metal doors with latches that are located further back, Ø 0.6mm

Art. Nr. KV 1091

### Universal Door Latch Spatula



Rebate length 20 mm The universal door latch spatula can be used on the lower edge of either a left or right door. It is the ideal tool for fire brigades and other rescue services, Ø 0.6mm

Art. Nr. KV 3173



### P-wedge Slider

An evolution of the panic door opener - a special tool for extremely difficult latches. Its ideal inclination and polished edges is suitable for closed but unlocked single rebate doors, opening to the inside, Ø 1.0mm

Art. Nr. KV2005

### Panic Door Opener



The Panic Door Opener for the easy opening of closed, single rebate doors that open to the outside, also with very difficult latches. Also suitable for use with double rebate doors, Ø 1.0mm

Art. Nr. KV1058



High quality, in-house production

## Unlocked Doors



### Door Latch Slider

This tool has been proven quite useful with difficult latches. Together with the door lever you can also open difficult single rebate doors. The door latch slider has a rebate length of 20mm, so you are best equipped for most cases. Its polished edges guarantee high success rates in opening single rebate doors. Also available with a 15mm rebate length, this length is mainly used in the new German Federal States, Ø 0.8mm

Rebate length: 15mm

Art. Nr. KV1013-15

Rebate length: 20mm

Art.Nr. KV1013

Rebate length: 25mm

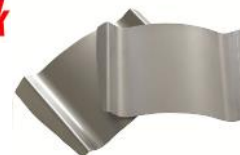
Art.Nr. KV1013-25

Rebate length: 30mm

Art.Nr. KV1013-30

Rebate length: 35mm

Art.Nr. KV1013-35



### Door Latch Slider - Set 15mm + 20mm

Door Latch Slider Set with: 15mm + 20mm

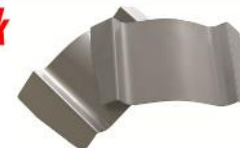
Art. Nr. KV 3246



### Door Latch Slider - Set 20mm + 25mm

Door Latch Slider Set with: 20mm + 25mm

Art. Nr. KV 3247



### Door Latch Slider - Set 30mm + 35mm

Door Latch Slider Set with: 30mm + 35mm

Art. Nr. KV 3248



High quality, in-house production

## Unlocked Doors



### Door Latch Slider - Set 4 pcs

Door Latch Slider Set with:  
20mm + 25mm + 30mm + 35mm

Art. Nr. KV 3249



### Door Latch Slider - Set 5 pcs

Door Latch Slider Set with:  
15mm + 20mm + 25mm + 30mm + 35mm

Art. Nr. KV 3250

### Special Clamping Pliers

Situation: There is a key on the inside of the door and it is turned. The door is closed but not locked, and a second key exists. This key, however, cannot be used because the cylinder has no emergency function. If the second key is machined accordingly, the door can still be unlocked. This clamping tool replaces the vice on the door, so keys can be optimally clamped for machining.

Art. Nr. KV1039



High quality, in-house production

21

## Unlocked Doors



### Lifter with 3 Square Bolt Knives

This tool can be used to lift security lock fittings for door entry, and it can also be used in an emergency situation to completely tear off security fittings. There is a square bolt knife marking on the lifter for optimal use. Included in delivery are three square bolt knives for 8mm, 9mm and 10mm - The knives are inserted in the gap under the lock plate and used to open the door by rotating the lock spindle.

The rounded edges prevent the steel from tearing out; the blades are thinner on the surface in order to achieve highest possible elasticity.

Art. Nr. KV1006



### Square Bolt Knife

The knives are inserted in the gap under the lifted plate and used to open the door by rotating the spindle. The rounded edges prevent the steel from tearing out; the blades are thinner on the surface in order to achieve highest possible elasticity.

8mm for 72mm latch distance (room doors); 9mm for panic locks and fire doors; 10mm for 92mm latch distance (front doors)

Square Bolt Knife 8mm	Art. Nr. KV2028-8
Square Bolt Knife 9mm	Art. Nr. KV2028-9
Square Bolt Knife 10mm	Art. Nr. KV2028-10
Square Bolt Set 3 pcs	Art. Nr. KV3086

### Metal Saw

For processing duplicate keys.



Metal Saw	Art. Nr. KV1035
Replacement Blades 6 pcs	Art. Nr. KV1035-E



High quality, in-house production

22

## Unlocked Doors



### Door Knob Snapper

The door handle snapper is always used when there is an extremely limited time available to open the door. Can be used for various door handle shapes due to clamping thread. For round knob handles you will need the Door Knob Breaker, which is available as an accessory. Length of Snapper: 550mm

Art. Nr. KV2085



### Accessories: Ball-Knob Snapper

For round knob handles with different diameters.

Art. Nr. KV2085-K



High quality, in-house production

## Defective Locks



+



### Mandrel with Cutting Disc

Cutting discs are clamped into this mandrel and can then be used for various tasks with the help of the straight grinder. For example, cutting the door hinges, processing a duplicate key and much more. Supplied with: Mandrel with Cutting Disc

Art. Nr. KV1080



### Mandrel Mini

Art. Nr. KV3419



### Cutting Disc

76 x 1.2 x 10mm for Mandrel

Art. Nr. KV1081



### Cutting Disc Mini

50 x 1.0 x 6mm for Mandrel Mini

Art. Nr. KV3316



### Emergency Set for Broken Latch

Supplied with::

- 1 Bi-metal - Hole Saw
- 1 prepared 8mm drill for the hole saw
- 1 prepared 10mm drill
- 2 High Grade Stainless Steel Hooks

Procedure:

- 1) Remove the front plate
- 2) The square socket opening serves to centre the Hole Saw to help remove the nut.
- 3) The opening that is created allows you to use the special stainless steel hooks to pull back the latch, even if the latch is jammed.

Art. Nr. KV1093



### 2 Stainless Steel Hooks

Consisting of left and right. Special tool for latch and bolt breakage

Art. Nr. KV3050



High quality, in-house production

## Defective Locks



### Multi-Opener



Newly launched exclusive in-house production. As the name says, a multi-talent. Roller cam locks can be pulled out of the locking piece with the multi-opener. For plastic doors with a single door and small backset, this tool allows you to completely disengage the bolt. You can lift doors, spread the door leaf away from the door frame, etc. - a powerful tool with many uses. A counter bearing is included in the scope of delivery that allows you to completely disengage the bolt on flush-mounted plastic doors.



Art. Nr. KV1030-V



### Door Frame Spreader

For doors with too little rebate clearance between the frame and the door leaf, the necessary rebate clearance can be created with this tool. Works excellently with foamed wood and plastic frames.

60cm in length, can be extended up to 100cm, additional 10cm expanding thread can create 110cm maximum.

Art. Nr. KV3056

### Load Bearing Prop

Length 95 cm, extendible to 170 cm, can be used as assembly support.  
(very stable, robust workmanship).

95 cm

Art. Nr. KV3125

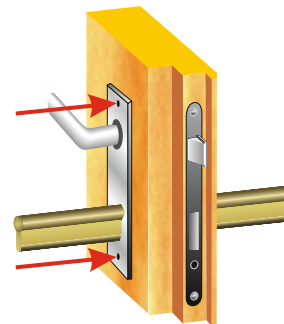


High quality, in-house production

25

## Lock Installation

### Cylinder Profile Rod



Ideal accessory for the installation of new fittings, locks and cylinders.

The profile rod enables precise horizontal alignment and a clean and accurate fit when installing fittings. This helps to ensure that filing the closing nose, or drilling holes that are too large, or other similarly unclean working methods are a thing of the past.

Cylinder Profile Rod Brass Length: 280mm  
Art. Nr. KV2004

Cylinder Profile Rod Aluminium Length: 300mm  
Art. Nr. KV3289



### Cylinder Gauge for Built-In Cylinders



Use this special slide gauge to quickly and reliably determine the dimensions of a double locking cylinder when installed.

The cylinder gauge is a tool that is frequently used in practice for time-saving precision

Art. Nr. KV3063

### DBB Morticer Lock Fitting Jig

To cut lock pockets for mortise locks; is simply operated with a standard drill (with 13mm drill chuck).

New version; now also easy to use on rebated doors. Due to the extra wide housing, all door thicknesses can be worked on without any modifications. Mortises for security strike plates are also possible.

DBB 1 Drilling Jig with 3 Cutters (CWB16, CWB20, CWB24)



Art. Nr. KV2099



High quality, in-house production

26



## Lock Installation

### DBB Morticer - Cutters

Wood Cutters	Size	
CWB16	15.9 mm	Art. Nr. KV3127-16
CWB18	17.5 mm	Art. Nr. KV3127-18
CWB19	19.0 mm	Art. Nr. KV3127-19
CWB20	20.0 mm	Art. Nr. KV3127-20
CWB21	20.6 mm	Art. Nr. KV3127-21
CWB22	22.2 mm	Art. Nr. KV3127-22
CWB24	23.8 mm	Art. Nr. KV3127-24
CWB25	25.4 mm	Art. Nr. KV3127-25
CWB27	27.0 mm	Art. Nr. KV3127-27
CWB32	31.8 mm	Art. Nr. KV3127-32

Aluminium Cutters	Size	
NAB16	16.2 mm	Art. Nr. KV3128-16
NAB19	19.0 mm	Art. Nr. KV3128-19
NAB25	25.4 mm	Art. Nr. KV3128-25
NAB32	31.8 mm	Art. Nr. KV3128-32

### DBB Morticer - Accessories

#### Long Drill Adaptor

With the drilling adaptor you can drill through the centre of the door to install cables for electric strikes.

Art. Nr. KV3129

#### Long Drill for Wood 950mm

Art. Nr. KV3130

#### Long Drill for Wood 1250 mm

Art. Nr. KV3130-1250

### DBB Morticer - Replacement Parts

**Standard Shaft** (up to 100mm cutting depth)  
Art. Nr. KV3350

**Long Shaft** (up to 185 mm cutting depth)  
Art. Nr. KV3100

**Slide Bearing** Art. Nr. KV3131

## Security Equipment

### Security Lock Bever "Turrus"



Apartment doors in apartment buildings often have such thin door leaves that the locking cylinder juts out two or more millimetres from the fitting. Such a locked door can be opened almost silently in seconds using a cylinder snapper or pulling tool.

The Bever Turrus lock solves this frequently occurring problem very inexpensively and extremely effectively: After removing the locking cylinder, the latch, the bolt and the PZ opening are blocked.

The emergency locksmith service can point out such a potential source of danger and offer this inexpensive solution.

Effective and clever security equipment for the most common weak point in apartment doors.

- Screwed lock case
- Stainless steel face plate
- Sturdy lock case in 1.75mm sheet steel, screwed
- Hardened ceiling screws
- Robust, durable locking mechanism
- VDS-certified

DIN right  
DIN left

Art. Nr. KV3005-R  
Art. Nr. KV3005-L



### Demo Lock with Transparent Cover Bever "Turrus"

We have provided the Bever "Turrus" Lock with a transparent housing cover, so that you can convincingly demonstrate to your customers and security consultants what happens when the locking cylinder is removed from this ingenious security lock. Also suitable for training purposes within a company: Opening a lock with the help of the Turrus opening hook can also be excellently demonstrated on this model.

Art. Nr. KV3032



### Profile Cylinder Demo Lock with Transparent Cover

We have provided the Profile Cylinder Lock with a transparent housing cover, so that you can demonstrate to your customers and security consultants what happens inside a lock.

Art. Nr. KV3318



### Demo Warded Lock with Transparent Cover

For a better understanding of its functioning

Art. Nr. KV3343



High quality, in-house production



### Circlip Removing Tool for Cylinder Locking Ring

To repin the cylinder core, the locking ring must be opened. This is very easy to do with this tool



Art. Nr. KV3066

3 Replacement Blades

Art. Nr. KV3066K



### Circlip Pliers for Cylinder Locking Ring

After repinning and reinserting the cylinder core, use these pliers to press the locking ring of the cylinder core together again.



Art. Nr. KV3064

### Pinning Shoe to Retain Driving Pins

To prevent the driving pins from falling out when removing the cylinder core during re-pinning, the pinning shoe is pushed into the lock channel of the cylinder.



Art. Nr. KV3065



### Mounting Blade

For pressing down the pin tumblers.

Art. Nr. KV3132



High quality, in-house production

## Locked doors

### Solid Carbide Rotary Burr

Highest quality solid carbide rotary burrs.

Ø (mm) x Length (mm)

	6x 60 mm mit 6mm shank	Art. Nr. KV1024
	6 x 80 mm mit 6mm shank	Art. Nr. KV1022
	6 x 120 mm mit 6mm shank	Art. Nr. KV1025
	3 x 50 mm mit 6mm shank	Art. Nr. KV3371
	3 x 65 mm mit 3mm shank	Art. Nr. KV3370
	3 x 65 mm with stop	Art. Nr. KV3370
	3 x 80 mm mit 3mm shank	Art. Nr. KV1027
	4 x 60 mm mit 6mm shank	Art. Nr. KV3014
	4 x 70 mm mit 6mm shank	Art. Nr. KV3351
	4 x 80 mm mit 6mm shank	Art. Nr. KV3088
	For Aluminium: 6 x 50 mm with 6mm shank	Art. Nr. KV1023
	For Aluminium: 6 x 80 mm with 6mm shank	Art. Nr. KV3087

### Solid Carbide Rotary Burr - Blue Tec Coated

	4 x 60 mm with 6mm shank	Art. Nr. KV3274
---	--------------------------	-----------------



High quality, in-house production

## Locked doors

Art. Nr. KV2064



### Fork Tension Tool

During cylinder milling, this tool optimally secures freely rotating cylinder cores and so prevents milling cutter breakage.

This professional tensioning tool can be used with almost all types of vehicle locks due to its differently wide notches.

A highly recommended tool for vehicle lock manipulation.

The tensioner is also very well suited as support when using our vehicle test wrenches.



### Auxiliary Key for Milling

Problems/interferences can occur during cylinder milling. This tool is used to keep cylinder engagement, for example in an emergency or hazard function.

Art. Nr. KV3081



### Screwdriver - Flat Bladed

Art. Nr. KV3111



### Screwdriver 3KS

Art. Nr. KV3112-2



High quality, in-house production

## Locked doors



### Screwdriver EVVA 3KS Set



Screwdriver EVVA 3KS and Fork Tension Tool EVVA 3KS

Art. Nr. KV3112-2-S



### Fork Tension Tool EVVA 3KS



Specially designed fork tension tool for the opening of an EVVA 3KS lock

Art. Nr. KV3272



### Screwdriver with Tip



An alternative to an auxiliary key.

Art. Nr. KV3159



### Bellows

when milling a lock cylinder, shavings are produced, and the housing and core pins are located in this channel. Therefore the bellows can be used to quickly remove metal shavings that could otherwise damage the cutter and obstruct the view.



Art. Nr. KV3034



High quality, in-house production

## Locked doors

### Keyway Cleaner

A practical tool for removing springs, pins and fragments from the milling channel.

Art. Nr. KV3233



### 16 Combination Wrench

Is required in conjunction with the special screwdrivers to drive the cylinder core effectively.

Art. Nr. KV3231



### Adhesive Dots 10 Pcs

The adhesive dots, made of fabric tape, are required if you have to drill through a security escutcheon.

Art. Nr. KV3267



### Cutter Knife

Art. Nr. KV3266



High quality, in-house production

## Locked doors

### Magnet Lifter

The telescoping magnetic lifter is required, for example, to remove the cam and the coupling from the lock opening when the locking cylinder is cracked, so that the universal key can be used. This tool is also very useful when small items fall down in inaccessible places.

Chromed version with telescopic extension.

Art. Nr. KV2081



### Circular Spring Steel Wire with Hold

You have created a second key to open a lock of a door because there is a key on the inside of the lock that has been turned. To snap the locking cam of the cylinder, you need the rounded spring steel.

Ø 1.0 mm  
Ø 1.5 mm

Art. Nr. KV1010  
Art. Nr. KV1010-1.5



### Universal Key

Opens a lock where the cylinder has been removed.

Universal Key short  
Universal Key long

Art. Nr. KV1017-K  
Art. Nr. KV1017-L



High quality, in-house production

35

## Locked doors

### Lock Snapper "Steel Claw"

Even if the Euro profile cylinder juts out only a few millimetres, this is no problem for the cylinder snapper. It can be closely adjusted to ensure a firm clamping fit on the cylinder.

Supplied with: Cylinder snapper, Allen key, spare screw with nut.



Art. Nr. KV1099

### Replacement Parts:

Replacement screw with nut (high quality)

Art. Nr. KV1099-EM

### Lock Snapper Profile and Round Cylinders

With this durable tool you can easily snap protruding locking cylinders to quickly open locked doors with the help of the universal key.

Exchangeable components also allow for use with round cylinders. Ø 32mm



Art. Nr. KV1015

### Lock Snapper - Round Cylinder 22mm

Even if the round cylinder juts out only a few millimetres, this is no problem for the cylinder snapper. It can be closely adjusted to ensure a firm clamping fit on the cylinder.

Supplied with: Cylinder snapper, Allen key



Art. Nr. KV3172



### Lock Snapper Attachment

If the cylinder core was milled out and there is no cylinder projection, this adapter is clamped into the Steel Claw Lock Snapper and the cylinder is broken at the front end.



Art. Nr. KV3119



High quality, in-house production

36



## Locked doors

### Zieh-Fix Cylinder Puller – Premium



The Zieh-Fix Premium is a solid, well proven tool for pulling out a cylinder core. Also suitable as a cylinder snapper or for partial pulling of a cylinder with subsequent snapping.  
Special tension bolts are required for use.

Art. Nr. KV1057

### Universal Break and Pull Tool



This tool combines the techniques of cylinder pulling and cylinder breaking. The clamping screw ensures a secure fit on the cylinder.

Supplied with:

Combination tool, transport case with foam inserts, 2 construction keys, 15 combination wrench, 5 pull screws 4.2 mm + 5.5 mm, core pull plate, pull screw adaptor, 4 spare clamping screws, spare part for pull screw holder

Art. Nr. KV3347

### Ratcheting Ring Wrench 17/19



This ratchet wrench can be used for quick use with the Multi Opener, the Pulling Bell and the Fitting Lifter.

Art. Nr. KV1019

### Bell Puller "Tornado"



Used for pulling cylinders and cylinder cores with pull screws.  
Supplied with 1 core base plate for profile cylinder.

Art. Nr. KV1055

#### Accessories and replacement parts:

Core pulling plate for round cylinders	Art. Nr. KV3124
Core pulling plate for profile cylinders	Art. Nr. KV1055-P
Ball bearing for Bell Puller	Art. Nr. KV1055-G
Tension bolt and nut set	Art. Nr. KV1055-M
Pulling mechanism	Art. Nr. KV1055-Z



High quality, in-house production

## Locked doors

### Pull Screws „ZIEH-FIX“



4.2mm „extra“	Art. Nr. KV1052	
4.2mm - 100 Pack	Art. Nr. KV1052-100	
4.2mm - 200 Pack	Art. Nr. KV1052-200	
4.2mm - 500 Pack	Art. Nr. KV1052-500	



4.8mm „super“	Art. Nr. KV1053	
4.8mm - 100 Pack	Art. Nr. KV1053-100	
4.8mm - 200 Pack	Art. Nr. KV1053-200	
4.8mm - 500 Pack	Art. Nr. KV1053-500	



5.5 mm „special“	Art. Nr. KV1054	
5.5 mm - 100 Pack	Art. Nr. KV1054-100	
5.5 mm - 200 Pack	Art. Nr. KV1054-200	
5.5 mm - 500 Pack	Art. Nr. KV1054-500	



Pittbull M6 (6mm)	Art. Nr. KV3120	
-------------------	-----------------	--

Please note that the "Pittbull" pull screw is NOT compatible with the "Tornado" bell puller.



High quality, in-house production

## Locked doors



### Pull Screw Adaptor



Used for pulling cylinders and cylinder cores with pull screws:  
The screws are fastened during insertion to prevent them from slipping off. Significantly longer service life of the Torx bit.  
With countersunk screw head holder and hexagonal outer profile.

Art. Nr. KV1047

**Replacement Bit** Art. Nr. KV1047-EB

### Reinforcement Rings (Set of 5)



For use with pull screws - prevents the pull screws from tearing off on particularly difficult cylinder cores and cylinders.  
Supplied with: 5 pcs.

Art. Nr. KV2061



### Cylinder Core Turner



When the cylinder core is pulled or milled out completely, this useful tool is used to rotate the cam in the cylinder and unlock the door.

Art. Nr. KV3093

### Tubular Cylinder Drill



Special drill for the destructive opening of tubular locks.

Art. Nr. KV3094



High quality, in-house production

## Locked doors

### Hole Saw Flat Cut



High-performance hole saw for Abloy Protec cylinders and other very high-quality cylinders, as well as safe openings.  
4 crosswise carbide tipped cutting tools (Ø 15.2 mm).  
Clamped centre drill for guiding in the cylinder triangular shank to fit 3 jawed chuck, 10mm

Art. Nr. KV3017

#### Accessories:

BKS Janus Art. Nr. KV3134-J

Dom Diamant Art. Nr. KV3134-D

### Hole Saw Flat Cut Special



The flat hole saw cut special is cylindrical throughout, suitable for high-quality transponder locking cylinders.

Art. Nr. KV3095

#### Accessories:

BKS Janus Art. Nr. KV3134-J

Dom Diamant Art. Nr. KV3134-D



### Bypass Drill Bit



The ideal tool for drilling the lock case. It prevents shavings from getting into the gearbox during the drilling process.  
Also applicable for lock defects (broken diver or torn connecting rod). This tool can also be used to open or bypass transponder locking cylinders.

Art. Nr. KV3244



High quality, in-house production

## Locked doors



### Knipex Twinkey

- Multi-function keys for operation of locking systems in the areas of building services (heating, plumbing, air conditioning and ventilation, electrical engineering), gas and water supply and shut-off systems.
- 8-arm version: 2 cross keys connected with space saving magnets.
- Reversible bit: slot 1.0 x 7 mm and Philips PH 2.
- Reversible bit and key connected by sturdy stainless steel wire rope.
- Weight-optimized zinc die-cast construction.
- High-quality surface coating.

Art. Nr. KV3083

### Multi-Function Utility Key



Allows the opening / closing of:

- External square 6-10 mm
- Internal square 5,7,8\* mm
- Internal triangular 8\* 9 mm

Application:

- Daimler-Benz\*
- Switchgear cabinet\*
- Phillips head screws
- Slotted head screws
- Locks with PZ holes (also for operating the locking mechanism after pulling the profile cylinder in emergency openings)

\* = plug-on adapter

Further applications:

Measurement of required profile cylinder lengths from 44 to 90mm

- Heating ventilation

Art. Nr. KV2000

### Dietrich Lever Pick



The classic tool designed to open non-curtained mortice locks where the key has been left in on the inside. The shape is decisive for perfect functioning (locking pin disengagement).

Art. Nr. KV1008



High quality, in-house production

## Locked doors

### Emergency Elevator Keys



1



2



3



4



5



6

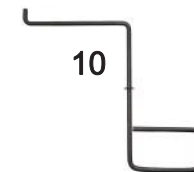
7



8



9



10



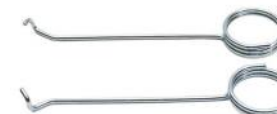
11

Nr. 1	OTIS 194 D 2	Art. Nr. KV3036	37,40 €
Nr. 2	SCHINDLER 631062 left	Art. Nr. KV3037	24,30 €
Nr. 3	SCHINDLER 639167 right	Art. Nr. KV3038	24,30 €
Nr. 4	SCHINDLER 525889 triangular	Art. Nr. KV3039	14,60 €
Nr. 5	OTIS SK 53102, triangular	Art. Nr. KV3040	21,10 €
Nr. 6	GO 27 AH 1	Art. Nr. KV3047	69,50 €
Nr. 7	OTIS GO 194 C1	Art. Nr. KV3041	18,00 €
Nr. 8	OTIS FO 194 F2	Art. Nr. KV3042	16,00 €
Nr. 9	OTIS GO 194 D1	Art. Nr. KV3043	27,00 €
Nr. 10	OTIS GO 194 A1	Art. Nr. KV3044	28,00 €
Nr. 11	OTIS FOA 194 BC 1	Art. Nr. KV3045	38,90 €



### Key Turner Set

#### For Warded and Lever Tubler Locks



The key is on the inside, a small child has locked the door and is no longer able to unlock it. Insert the tool into the key opening and turn the key over the lever in the opening direction. The set contains lever turners for clockwise and counter-clockwise rotation and a key turning aid.

Art. Nr. KV1056



### SEK Set

Set consists of:

- Lock Puller
- Lock Lifter Dietrich
- 3-Piece Wire Set
- Spiral Opener
- Key Shaft Turner

Art. Nr. KV3403



High quality, in-house production

## Locked doors



### Key Shaft Turner

If the ward of a warded lock is not in the correct position to be allow the use of a key turner, the ward can be turned back into the correct position with the help of the Key Shaft Turner.

Art. Nr. KV3271



### Warded Lock Set

Set consists of:  
- Lock Lifter Dietrich  
- Key Turner Set:  
- Key Shaft Turner

Art. Nr. KV3324



### Lever Lock Pick Set K 1-12

These lock picks can be used to open many lever locks due to their universal design.

Art. Nr. KV1007



### Lever Lock Pick Set O 1-15

Art. Nr. KV2089



### Jiggler Key Set - JIG MICRO

A set of 6 small jiggler keys for opening disc tumbler cylinders on cabinet doors, mailbox locks, etc.

Art. Nr. KV2007



### Jiggler Key Set JIG MINI

A set of 6 small jiggler keys for opening disc tumbler cylinders on desk drawers, furniture doors, mailbox locks, etc.

Art. Nr. KV2008



High quality, in-house production

43

## Locked doors



### Tubular Lock Pick HPC TLP-7SB BIKE

A high-precision tool made in the USA for the picking of tubular locks. This type of lock is for Alarm systems - Computer-Locks - Car Wheel/Pedal Locks - Bike Locks - etc.  
The lock code is decoded and you can read the lock code and produce a duplicate key.

Art. Nr. KV2009



### Turrus Opening Hook

You have pulled a lock cylinder with your pulling tool and the Bever--Turrus -Security Lock has the catch, the latch, and the profile cylinder opening blocked.  
To gently open a locked Bever-Turrus lock, you need this hook and the detailed, illustrated description, which is supplied free of charge.  
For those who do not want the hardware, the lock, or the door damaged, this is an indispensable tool.

Art. Nr. KV3003

### Padlock Shim Picks

For padlocks with spring lever latch locking.  
These very thin plates are pushed between the lock shank and the housing and then pushed down to push back the spring-loaded latches.  
Supplied with:  
20 pcs.  
5 shims each in four different sizes

Art. Nr. KV3137



High quality, in-house production

44

## Window



### Genius Tilt & Turn Window Opener

This tool opens tilt & turn windows from the outside. The window handle can only be pressed down when the window is closed. That's what this ingenious tool does from the outside. Special materials selected after long test series guarantee successful performance.

Advantages:

- Low costs due to ingenious opening technology
- Small size (pocket size)
- Low weight, yet extremely durable
- No more slippage possible with counter traction
- Also suitable for exotic window handle shapes
- No need to use a suction cup
- Fits through the smallest window gaps



Art. Nr. KV1005

#### Repair Kit

Consist of: sturdy nylon ribbon cables, 5



Suitable for these handles

Art. Nr. KV1005-KIT

### Genius Retrofit

We have significantly improved this patented tool once again by adding special flat ribbons to the pull cords - to make sure that no cuts are made to a wooden window. If you own a regular Genius with rounded cords and wooden ball, send it to us and we will upgrade it to the latest version.

Art. Nr. KV1005-U

### Genius Pur Tilt & Turn

Without accessories

Art. Nr. KV1005-P

### Opening Aid

Art. Nr. KV1005-AS



High quality, in-house production

45

## Window

### Window Opening Bump Technique - Hammer

This shock-absorbing hammer with lead bead filling is the ideal tool for using when applying the window opening bump technique.

For windows with a slightly tilted window handle, the handle can be moved into its open position by firmly striking or "bumping" the window frame. A very appealing alternative to opening a door.

Dimensions: 320 x 100 x 50mm

Art. Nr. KV3068



### Window Opening Bump Technique - Strike Block

With this indestructible plastic block you can prevent any damage to the window frame and injuries to your hand when using the window bump technique, as very strong blows are necessary.

Art. Nr. KV3069



### Window Opening Bump Technique Set

We also offer the articles described above as a set

Art. Nr. KV3070



### Specialized Tool Case for Windows

Ideal for fire brigades who work with the following operational tactics: two men at the front door, two men around the house. With this tool case, the outside troop has everything it needs for dealing with tilted windows and windows with incorrectly positioned handles.

Supplied with:  
Genius Tilt & Turn Window Opener  
Opening Aid  
Window Opening Bump Techni-

Art. Nr. KV3085



Discontinued model



High quality, in-house production

46



## Window



### Specialized Tool Case for Windows - Premium

Art. Nr. KV3314

Ideal for fire brigades who work with the following operational tactics: two men at the front door, two men around the house. With this tool case, the outside troop has everything it needs for dealing with tilted windows, windows with incorrectly positioned handles and windows that need to be cut to enter.

#### Contents:

- Window Opening Bump Technique - Hammer
- Window Opening Bump Technique - Strike Block
- Genius Tilt & Turn Window Opener
- Opening Aid for Genius Tilt & Turn Window Opener
- Cutter Knife
- Window Cord
- Milwaukee M18 BDD Compact Drill Driver  
Incl. 2 Batteries M 18 4.0 Ah (one is supplied loose)  
Battery M12 - 18C
- 2X Diamond Coated Hole Saw for Glass 45mm
- Oil can
- 2x Screw Plugs
- 2x Acrylic Drill Guide
- 6x Acrylic Hole Covers
- Safety Goggles for Glass Cutting
- Opening Lever for Window Handles
- Window Handle Cracker
- Threading Wire
- 2x Respirator Masks



Bottom



High quality, in-house production

## Window - Glass

### Diamond Coated Hole Saw for Glass 45mm



The diamond glass hole saw is ideal for cutting through all types of window panes.

Only toughened safety glass (ESG) cannot be cut without breakage.

This method is an alternative to breaking the window pane.

Specially developed for fire brigades, this method is also used by locksmiths and manual workers. If the door can no longer be opened from the outside due to a bolt or latch breakage, there is the option of reaching the hinge side and the inside.

Extremely long service life.

Shaft: 9,5mm

Art. Nr. KV3303



### Opening Lever for Window Handles

If a hole has been cut through the window pane with the aid of the diamond glass hole saw, the handle can be pushed down with the opening lever.

Art. Nr. KV3295



### Threading Wire

The thread wire is needed to "thread" the long end of the rope of the window handle snapper through the upper hole and then be able to break off the locking handle.

Art. Nr. KV3340



High quality, in-house production

## Window - Glass

### Acrylic Drill Guide

Acrylic Drill Guide for Diamond Hole Saw for Glass



Drill Guide 45mm Art. Nr. KV 3304



### Acrylic Hole Cover



The acrylic hole cover is used to cover the hole cut with the diamond glass saw.

Art. Nr. KV3298



### Screw Plugs



The Screw Plug is used to close the hole cut with the diamond glass saw.

Art. Nr. KV3299



High quality, in-house production

49

## Window - Glass

### Safety Goggles for Glass Cutting



Art. Nr. KV3301

### Oil Spray Can

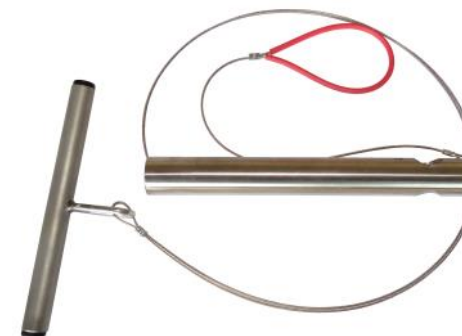
Since the window glass should not become too hot when cutting, a means of cooling is required. The oil can is used for this purpose.



Art. Nr. KV3293

### Window Handle Snapper

If you come across a locking handle during the window cutting, it can be sheared off with the help of the window handle snapper.



Art. Nr. KV3330



High quality, in-house production

50

## Broken Keys

### Extractor Set Majestic



If keys have broken off inside a lock, the only way to remove the broken part in the cylinder is with this special tool.

Art. Nr. KV1050

### Extractor Set DINO



If a key has broken off inside a lock, the only way to remove the broken part in the cylinder is with this special tool.

Supplied with:  
4 Extractors  
+ 1 Rake Pick  
+ 1 Tension Tool

Art. Nr. KV3091

### Extractors Majestic



EX 1

Single picks with aluminium grips



EX 2

EX 1 Art. Nr. KV3180



EX 3

EX 2 Art. Nr. KV3181



EX 4

EX 3 Art. Nr. KV3182

EX 4 Art. Nr. KV3183

### Extraktor EX 5

EX 5 Art. Nr. KV3179



### Extraktor MHLP 100

Art. Nr. KV3138



High quality, in-house production

## Hand-Picking

Hand picking is an opening method that requires sophisticated sensitivity. This involves unlocking a safety cylinder that is blocked by a number of small tumblers. If a rotational force is exerted on the cylinder core, the individual tumblers can be pushed into the opening position one after the other with the aid of a pick tool. With the handpick method, the manufacturing tolerances of the cylinder are used and unlocked.

### Pick Set DINO (Set of 7)

7 Pieces: 4 Picks + 3 Tension Tools



This DINO pick set sets new standards in functionality, handling and design. Light picks with ergonomically shaped, metallic blue anodized handles and high-quality spring steel tips. Included is a practical leather bag with two compartments and snap button belt loop.

Art. Nr. KV2049

### Pick Set DINO (Set of 14)

14 Pieces: 9 Picks + 5 Tension Tools.



This DINO pick set sets new standards in functionality, handling and design. Light picks with ergonomically shaped, metallic blue anodized handles and high-quality spring steel tips. Included is a practical leather bag with two compartments and snap button belt loop.

Art. Nr. KV2050

### Tension Tools DINO

New design with finely adjustable tension. An additional spring steel can be inserted through the eyelet.



Art. Nr. KV2062



High quality, in-house production

## Hand-Picking



### Pick Set DINO Secretary

4 special picks for dimple cylinders (DOM and others).  
With elegant, golden metal box.

Art. Nr. KV2017



### Pick Set DINO Navigator

18 Pieces: 15 Picks + 3 Tension Tools.  
Picks with ergonomically shaped handles. With a practical pouch and belt loop.

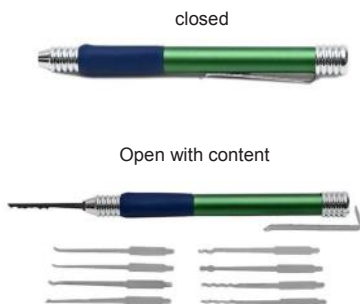
Art. Nr. KV2015



### Pick Set DINO A-Grade

8 Pieces: 7 Picks, 1 Tension Tool  
With practical leather bag with belt strap

Art. Nr. KV2016



### Pen Pick Set DINO

Pocket Pick Set  
DINO 9 Picks  
1 Tension Tool  
The professional set for on the go. The picks are force-locked with the pin by means of the screw clamping device.

Art. Nr. KV2086

## Hand-Picking

### Pick Set Majestic MDPK (Set of 32)



26 Picks, 4 Tension Tools, 2 Extractors

Art. Nr. KV1033



### Pick Set Majestic 9

6 Picks  
1 Extractor  
2 Tension Tools

Art. Nr. KV2047



### Pick Set Majestic 13

9 Picks  
1 Extractor  
3 Tension Tools

Art. Nr. KV1034

## Hand-Picking



### Single Picks Majestic

Classic picks with Aluminium grip plates.

	MHLP100	KV3138
	MHLP101	KV3167
	MHLP102	KV3147
	MHLP103	KV3140
	MHLP104	KV3141
	MHLP105	KV3142
	MHLP106	KV3143
	MHLP107	KV3144
	MHLP108	KV3145
	MHLP109	KV3146
	MHLP110	KV3139
	MHLP111	KV3148
	MHLP113	KV3149



### Tension Tool TW 15

Tension tool for hand picking.

Art. Nr. KV3178

### Flat Spring Steel - Tension Tool



TW 17	Art. Nr. KV3150	1,58 €
TW17L	Art. Nr. KV3151	1,58 €
TW20	Art. Nr. KV3152	1,58 €
Tension Tool KV	Art. Nr. KV3402	1,58 €



High quality, in-house production

55

## Hand-Picking

### Pick Set HPC NDPK-deLuxe

16-piece, high quality pick set from the USA 10 Picks  
2 Extractors  
4 Tension Tools  
Leather pouch with 6 compartments

Art. Nr. KV2013



### Pick Set HPC NDPK-24 „Pro Mixer“

24-piece high quality pick set from the USA 16 Picks  
3 Extractors  
5 Tension Tools  
Leather pouch with 6 compartments

Art. Nr. KV2014



### Tension Ring



This semi-automatic tension ring helps make work easier, as tension can be minutely applied to both the left and right side.  
Adjustable tension pins allow the tool to be easily adapted to the different cylinder sizes.

Art. Nr. KV1079



High quality, in-house production

56



## Hand-Picking



### Training Cylinder



For all advanced opening techniques such as hand picking, electric lock picking, bump key use, impressioning, the understanding of what happens inside the cylinder during manipulation is of decisive importance for success. In these fully functional brand cylinders with five tumblers, the key pins and the driver pins are visible. Supplied with 3 keys.

T-Cylinder Standard Art. Nr. KV3290

T-Cylinder Advanced Art. Nr. KV3291

### Plug-spinner



To help when opening the cylinder of a 2-speed locked mortise lock. You can save yourself a second picking by quickly flipping the cylinder core over the locking point of the tumblers with this tool.

Art. Nr. KV1086

### Plug Spinner Flip-it



To help when opening the cylinder of a 2-speed locked mortise lock. You can save yourself a second picking by quickly flipping the cylinder core over the locking point of the tumblers with this tool.

Art. Nr. KV2033

### Cross Lock Pick Set



This pick set opens 3 and 4-way cross-locks with an installation depth of up to 75mm. Even the iconic high-security cross-lock can be opened with this pick.

Art. Nr. KV3136



High quality, in-house production

## Hand-Picking

### Pistol Plug Spinner GO



Lock plug spinner GO. Even with heavyweight multi-point locking systems, this plug spinner manages to flip the cylinder core over the zero point. This rotary spinner is also available with an insert for bump keys - see Bump Keys and Tools.

Art. Nr. KV3262

### Manual Pick Gun



With the manually operated pick gun, single, hard blows are triggered by pressing the trigger. These blows are transmitted through the picking needle to the tumbler pins in the cylinder. The bump key effect is created. The impact stroke is adjustable. Picking with this tool requires a great deal of skill.

"EU-Version", with the pick blade striking downward

Art. Nr. KV2065

### Book „Easy Picking“



- Step by step instructions
- Easy to understand
- Available in 5 European languages

Art. Nr. KV3101



High quality, in-house production

## Electric Lock Picks

### Electric Pick Gun - Master

A powerful electric pick that reliably and successfully opens standard cylinders. Good results with standard cylinders.

Supplied with: Electric Pick Gun, 9 tension tools, 10 pick blades, Allen key, spare clip, battery charger, carrying case

Art. Nr. KV3319



### Cylinder Core Tensioner

Ideal pretensioning device when using electric picks. The cylinder core tensioner requires hardly any space in the cylinder core.

Art. Nr. KV3162

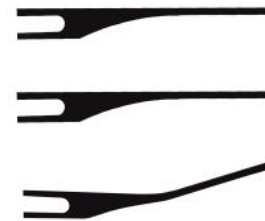


High quality, in-house production

## Electric Lock Picks

### Electric Pick Blades

High quality electric pick blades from Majestic. Electric pick blades that can be used with all our electric picks and pick guns.



Straight 0,6mm

Art. Nr. KV3188

Straight 0,9mm

Art. Nr. KV3189

Angled 0,6mm

Art. Nr. KV3190



### Bump Key Files Set

Opening closed doors with the help of the bumping and rapping technique opens up completely new possibilities. Make your own bump key with this special design that creates the optimum angle for the tumbler grooves. This allows you to create a bump key out of any other key to open another lock.



Art. Nr. KV2018



High quality, in-house production



### Bump Key Set

The bump key set offers you bump keys that have optimum angled cuts for tumbler locks. They cannot be used in master key systems because these do not have standard profiles.

The Set contains 20 bump keys for KBV-, Basi/Saturn-, EVVA-, BKS-, CES-, ABUS-, Gera-, BAB-, DOM-, Wilka-, Nova-, Winkhaus-, LOB-, Corbin-, Ikon-cylinders.

Our bump key hammer helps ensure best results.

Art. Nr. KV2066



### Bump Key Hammer

Experienced users of the bump and rapping techniques report that one's success depends on many factors:

The age of a cylinder (and thus the clamping force of the pin springs), the maximum length and differences in the length of the core pins, the type of key profile, differences in the designs of different manufacturers, etc.

It is therefore necessary to control the type of stroke very carefully - short, dry strokes, but also light, springy variations are necessary in order to achieve the right percussion effect with the bump key technique and so be successful.

That is why we have developed a tool that, due to its nature, allows all bump variations. Powerful, light, dry, springy blows of varying intensity can be produced effortlessly.

Art. Nr. KV2067



### Pistol Plug Spinner SSE GO



This version of the GO Pistol Plug Spinner has been supplemented by the SSE Plug Spinner Adapter for bump keys:

If you turn the cylinder core with a bump key and pull back the bolt in the lock, you may need to be able to turn it further to pull back the latch and so open the door from the outside. To avoid having to turn the cylinder core again by bumping it, use the innovative SSE Plug Spinner Adapter for bump keys.

Art. Nr. KV3264



### Bump Key Plug Spinner - Adapter

The SSE adapter for bump keys was specially developed for the GO Plug Spinner. If you turn the cylinder core with a bump key and pull back the bolt in the lock, you may need to be able to turn it further to pull back the latch and so open the door from the outside. To avoid having to turn the cylinder core again by bumping it, use the innovative SSE Plug Spinner Adapter for bump keys.

The SSE snap-on adapter can be quickly mounted with a magnet attachment and without tools.

Art. Nr. KV3263



## Safe & Vault Opening

### Carbide Drills with Tungsten Tip

For drilling out high security, drill-proof cylinders with a power drill. Also suitable to open up safes and vaults.



Ø 4.0 x Length 75mm	Art. Nr. KV3195
Ø 5.0 x Length 85mm	Art. Nr. KV3196
Ø 5.0 x Length 150mm	Art. Nr. KV3197
Ø 5.5 x Length 85mm	Art. Nr. KV3198
Ø 6.0 x Length 100mm	Art. Nr. KV3199
Ø 6.5 x Length 100mm	Art. Nr. KV3200
Ø 6.5 x Length 150mm	Art. Nr. KV3201
Ø 7.0 x Length 100mm	Art. Nr. KV3202
Ø 8.0 x Length 120mm	Art. Nr. KV3203
Ø 8.0 x Length 200mm	Art. Nr. KV3204
Ø 10.0 x Length 120mm	Art. Nr. KV3205
Ø 10.0 x Length 200mm	Art. Nr. KV3206
Ø 10.0 x Length 300mm	Art. Nr. KV3207
Ø 13.0 x Length 150mm	Art. Nr. KV3208
Ø 13.0 x Length 300mm	Art. Nr. KV3209



### Vault Cutter 23mm

The ideal hole saw to drill open a vault or safe.  
The different angles of the carbide cutting edges ensure a perfect cut.  
Depth of cut: 25mm,  
Shank size: 12.7mm

Art. Nr. KV3305



High quality, in-house production

## Safe & Vault Opening

### Carbide-Drill Bits GRT-Series



Drills for exceptionally hard materials (e.g. vault steel)

Ø 6.35 x Length 160mm	Art. Nr. KV3212
Ø 6.35 x Length 300mm	Art. Nr. KV3213
Ø 8.00 x Length 300mm	Art. Nr. KV3216
Ø 9.60 x Length 300mm	Art. Nr. KV3218
Ø 13.30 x Length 160mm	Art. Nr. KV3219



### Drill Bits - GRT Special Series

Drill with very flattened tip. For drilling the last few millimetres in order not to damage the safe lock mechanism.

Ø 13.30 x Length 120mm	Art. Nr. KV3222
------------------------	-----------------



High quality, in-house production

## Milwaukee Machines and Accessories 235 V

We are authorised Milwaukee dealer. On the following pages there is a small part of Milwaukee products. **If interested in machines and accessories which are not listed in our catalogue just ask for free of charge info material / Milwaukee Catalogue.**



Milwaukee offers a 3 year warranty on tools and up to 2 year warranty on REDLITHIUM-ION™ batteries, when registered.

### Die Grinder DGL 30 E

- Variable speed enables complete user control.
- Soft-start electronics, precise start of grinding and maximum safety.
- Long spindle enables easy access of awkward places.
- Precision metal gearbox with double bearing setting of spindle.

#### Specifications:

Power Input	600 W
No load speed	10,000 - 30,000 rpm
Collet size	3mm/6mm
Weight	1.9 kg

Art. Nr. KV2039



### Angle Grinder AGV 10-125 EK

#### Specifications:

Power Input	1.000 W	<b>1,000 Watt 125mm Angle Grinder</b>
No load speed	11.000 rpm	- Powerful, 1000 W motor for strong performance in all applications
Disc diameter	125 mm	- Extreme compact design with an overall short length of 276 mm and 2.2 kg for most comfortable handling
Spindle size	M14	- Line lock out function to prevent automatic start up after power breakdown
Cutting depth	33 mm	- Soft start for smooth start up
Weight	2.2 kg	- Anti-vibration side handle for less fatigue
		- Burst resistant and tool-free quick release safety guard for fast adjustment
		- Ramped slide switch for easy start up, even when wearing gloves
		- 4 m cable



Art. Nr. KV3024



High quality, in-house production

## Milwaukee Machines and Accessories 12 V

### REDLITHIUM-ION



+



### Compact Drill Driver M12 BDD-202X

- Milwaukee® high performance sub compact drill driver measures 187 mm in length making it ideal for working within confined spaces
- REDLINK™ overload protection electronics in tool and battery pack deliver best in class system durability
- 10 mm metal chuck for quick bit changes and bit retention
- Optimised handle for better control and improved grip
- Individual battery cell monitoring optimises tool run time and ensures long term pack durability
- On board fuel gauge and LED light - added user convenience and illumination in low lit working conditions
- REDLITHIUM-ION™ battery pack provides superior pack construction.
- Flexible battery system: works with all Milwaukee® M12™ batteries

#### Specifications:

Battery pack voltage/capacity	12 V / 2.0 Ah
No load speed 1. / 2. gear	0-400 / 0-1500 (rpm)
Max. torque	30 Nm
Max. drilling steel / wood	10 / 22 mm
Weight with battery pack	1.2 kg

Art. Nr. KV3009BDD

### Battery M12 B2

Art. Nr. KV3022-2

Battery Type: Red Li-Ion  
Voltage: 12 V  
Capacity: 2.0 Ah



REDLITHIUM-ION

### Battery M12 B4

Art. Nr. KV3026-4

Battery Type: Red Li-Ion  
Voltage: 12 V  
Capacity: 4.0 Ah



REDLITHIUM-ION

### Battery M12 B6

Art. Nr. KV3026-6

Battery Type: Red Li-Ion  
Voltage: 12 V  
Capacity: 6.0 Ah



REDLITHIUM-ION

### Charger C12C

Charging Range: 12 V  
Chaging time: 40/70/80/130 min.  
Battery Pack: 2.0/3.0/4.0/6.0 Ah



Art. Nr. KV3023



High quality, in-house production



### Compact 2-Speed Drill Driver M12 FDD-202X

- Milwaukee® designed and built brushless POWERSTATE™ motor delivers more power in a more compact size
- REDLINK PLUS™ intelligence system delivers an advanced digital overload protection for tool and battery and uniquely enhances the tool performance under load
- REDLITHIUM-ION™ battery pack provides superior pack construction, electronics and fade-free performance to deliver more run time and more work over pack life
- Individual battery cell monitoring optimises tool run time and ensures long term pack durability
- 13 mm metal chuck for quick bit changes and bit retention
- Electronic clutch with 16 torque settings and plus 1 for locked clutch drilling
- Fuel gauge displays remaining charge
- Brightest LED workspace illumination
- Flexible battery system: works with all Milwaukee® M12™ batteries

**REDLITHIUM-ION**



#### Specifications:

Battery pack voltage/capacity	12 V / 2.0 Ah
No load speed 1. / 2. gear	0-450 / 0-1700 (rpm)
Max. torque	44 Nm
Max. drilling steel / wood	13 / 35 mm
Weight with battery pack	1.5 kg

+



Art. Nr. KV3406

### Compact Rotary Tool C12 RT

- Versatile cordless solution for cutting and removal applications
- REDLINK™ overload protection electronics in tool and battery pack deliver best in class system durability
- Variable speed (5000 - 32,000 rpm)
- 0.8 mm – 3.2 mm collet fits all current accessories in the market
- Spindle lock mechanism for easy accessory changes
- Superior ergonomics and lightweight
- Individual battery cell monitoring optimises tool run time and ensures long term pack durability
- Fuel gauge displays remaining charge
- Flexible battery system: works with all Milwaukee M12 Batteries



Art. Nr. KV3404



High quality, in-house production

### Drill Driver M18 BDD-402X

- Most compact drill driver in its class, measuring only 185 mm in length
- REDLINK™ overload protection electronics in tool and battery pack deliver best in class system durability
- REDLITHIUM-ION™ battery pack provides superior pack construction, electronics and fade-free performance to deliver more run time and more work over pack life
- All-metal gear case and 13 mm metal chuck for quick bit changes and bit retention
- On board fuel gauge and LED light
- Individual battery cell monitoring optimises tool run time and ensures long term pack durability
- Flexible battery system: works with all Milwaukee® M18™ batteries

#### Specifications:

Battery Pack Voltage/Capacity	18 V/4.0 Ah
No load speed 1./2. gear	0-450/0-1,800 min-1
Chuck capacity	1,5-13 mm
Max. drilling steel/wood	13/38 mm
Max. torque	60 Nm
Weight with battery pack	2.0 kg



**REDLITHIUM-ION**



Art. Nr. KV3192



High quality, in-house production

### Fuel Drill Driver M18 FDD-502X

- Brushless motor up to 50% more efficient and up to 2x longer life
- REDLITHIUM-ION™ battery pack provides superior pack construction, electronics and fade free performance to deliver more run time and more work over pack life
- REDLINK™ overload protection electronics in tool and battery pack deliver best in class system durability
- Compact design, reducing fatigue when used for extended periods of time and allowing access to tight work spaces.
- Individual battery cell monitoring optimises tool runtime and ensures long-term pack durability.
- Bright LED light for workplace illumination.
- All-metal reversible clip: hang your tool quickly and easily.

#### Specifications:

Battery Pack Voltage/Capacity	18 V/5.0 Ah
No load speed 1./2. gear	0-550/0-2,000 min-1
Chuck capacity	1,5-13 mm
Max. drilling steel/wood	13/65 mm
Max. torque	135 Nm
Weight with battery pack	2.4 kg



Art. Nr. KV3156-5

### Fuel Drill Driver M18 FDD-0 (Tool Only)

#### Tool Only includes:

1x M18FDD-0, 1x Side Handle, 1x Belt Clip, 1x Bit Holder

Art. Nr. KV3156-0



High quality, in-house production

### Fuel Angle Grinder M18 CAG-125X-502X

- Milwaukee® designed and built brushless POWERSTATE™ motor with the power to grind and up to 10x more tool life
- REDLINK PLUS™ intelligence system delivers an advanced digital overload protection for tool and battery and uniquely enhances the tool performance under load
- REDLITHIUM-ION™ battery pack provides superior pack construction, electronics and fade-free performance to deliver more run time and more work over pack life
- Non-lockable safety paddle switch with line-lock-out function to prevent automatic start up
- Premium gearing system - same system as used at high performance corded grinders
- Slimmest handle design available on market with paddle switch
- Removable dust screen to prevent debris entrance, prolonging motor life
- 115 mm keyless guard - great cutting capacity and fast guard adjustment without using a spanner
- FIXTEC nut for tool-free disc change
- Anti-vibration side handle for lower vibration

Art. Nr. KV3077CAG

#### Specifications:

Battery Pack Voltage/Capacity	18 V/5.0 Ah
No load speed	11.000 rpm
Disc diameter	125 mm
Spindle size	M14
Cutting depth	33 mm
Weight with battery pack	2.5 kg



### Fuel Angle Grinder M18 CAG-125X-0 (Tool Only)

Art. Nr. KV3076CAG



High quality, in-house production

### Fuel Sawzall Reciprocating Saw M18 CSX-502X



- Milwaukee® designed and built brushless POWERSTATE™ motor with the power to grind and up to 10x more tool life
- REDLINK PLUS™ intelligence system delivers an advanced digital overload protection for tool and battery and uniquely enhances the tool performance under load
- REDLITHIUM-ION™ battery pack provides superior pack construction, electronics and fade-free performance to deliver more run time and more work over pack life
- Gear-protecting clutch: extends gear and motor life by absorbing high impact forces caused by sudden blade lock-ups.
- QUIK-LOK® universal clamp accepts all reciprocating saw blades with a concealed, keyless clamp system.
- Keyless adjustable shoe allows user to easily change position of shoe to extend blade life.
- LED light illuminates dark work spaces.

Art. Nr. KV3079CSX

#### Specifications:

Battery Pack Voltage/Capacity	18 V/5.0 Ah
No load stroke rate	0-3000 (spm)
Stroke length	28.6 mm
Max. cutting depth in soft wood	300mm
Max. cutting depth in steel	20mm
Max. cutting depth in aluminium	25mm
Weight with battery pack	4.1 kg



### Fuel Sawzall Reciprocating Saw M18 CSX-0 (Tool Only)

Art. Nr. KV3080CSX



High quality, in-house production

### Power Pack 18 V/4.0 Ah

REDLITHIUM-ION



#### Supplied with:

- Drill Driver M18 BDD
- Die Grinder M18 FDG-0X
- 2 x 18V /4.0 Ah Red LI-Ion Battery Pack
- Charger M12-18C

TOP  
OFFER

Art. Nr. KV3226

### Wet/Dry Vacuum M18 VC/ 0 Version

- Onboard accessory and hose storage for quick access to accessories.
- Stackable tool box design for added portability and easier storage.
- Large capacity reduces downtime to emptying.
- Ideal for both wet and dry applications.



#### Specifications:

Battery Pack Voltage	18 V
Capacity solids/liquids	9.65 / 7.5 l
Max. vacuum	80 mbar
Air volume	1246 l/min
Hose diameter	31.5 / 41.7 mm
Hose length	1.8 m
Weight with battery pack	5.4 kg

Art. Nr. KV3010-18



High quality, in-house production

## Milwaukee Machines and Accessories 18 V

Art. Nr. KV3355

### Fuel Die Grinder M18 FDG-502X



- Milwaukee® designed and built brushless POWERSTATE™ Motor with corded performance, up to 20 min of grinding on a 5.0 Ah battery and up to 10x more tool life
- REDLINK PLUS™ intelligence system delivers an advanced digital overload protection for tool and battery and uniquely enhances the tool performance under load
- REDLITHIUM-ION™ battery pack provides superior pack construction, electronics and fade-free performance to deliver more run time and more work over pack life
- Universal reception to fit both, 6 and 8 mm accessories
- Slimmest handle design available on market
- Removable dust screen to prevent debris entrance, prolonging motor life
- Rubber front provides most comfortable handling
- Line-lock out function to prevent automatic start up
- Fuel gauge displays remaining charge
- Flexible battery system: works with all Milwaukee® M18™ batteries
- Supplied with 6 mm & 8 mm collet, 15 mm & 17 mm open ended spanner, 2 x dust screens

#### Specifications:

Battery Pack Voltage/Capacity	18 V/5.0 Ah
No load speed	27,000 rpm
Max. grinding accessories diameter	50mm
Collet size	6mm/8mm
Weight	2.1 kg



### Fuel Die Grinder M18 FDG-0 (Tool Only)

Art. Nr. KV3356



Art. Nr. KV3368

### Car Charger M12-18AC

Charging Range: 12 - 18 V  
Chaging time: 40/80/100/124/180 min.  
Battery Pack: 2.0/4.0/5.0//6.0/9.0 Ah



Art. Nr. KV3405

### Schnellladegerät M12-18FC

Charging Range: 12 - 18 V  
Chaging time: 26/47/59/68/95 min.  
Battery Pack: 2.0/4.0/5.0//6.0/9.0 Ah



Art. Nr. KV3074

### Ladegerät M12-18C

Charging Range: 12 - 18 V  
Chaging time: 40/80/100/124/180 min.  
Battery Pack: 2.0/4.0/5.0//6.0/9.0 Ah



High quality, in-house production

## Milwaukee Machines and Accessories 18 V



### Collet for HD18 SG

3mm	Art. Nr. KV1045-3
6mm	Art. Nr. KV1045-6



### Union Nut for HD 18 SG

Art. Nr. KV3110



### Collet & Union Nut for M18 FDG

3mm	Art. Nr. KV3412-3
6mm	Art. Nr. KV3412-6
8mm	Art. Nr. KV3412-8

REDLITHIUM-ION



### Battery M18 B4

Battery Type: Red Li-Ion  
Voltage: 18 V  
Capacity: 4.0 Ah

Art. Nr. KV3109

REDLITHIUM-ION



### Battery M18 B5

Battery Type: Red Li-Ion  
Voltage: 18 V  
Capacity: 5.0 Ah

Art. Nr. KV3243

REDLITHIUM-ION



### Battery M18 B6

Battery Type: Red Li-Ion  
Voltage: 18 V  
Capacity: 6.0 Ah

Art. Nr. KV3410

REDLITHIUM-ION



### Battery M18 B9

Battery Type: Red Li-Ion  
Voltage: 18 V  
Capacity: 9.0 Ah

Art. Nr. KV3411



High quality, in-house production



## Equipment and Accessories

### Inverter 12V/150 W



Up to 150W power.  
Charge your battery in your car:  
For 12V= current source to 230V~. Your normal car battery charger can be connected to this power source. Ensures full batteries during mobile use. The can form allows optimum storage inside the vehicle.

Art. Nr. KV3054-2

### Inverter 24V/300W



Up to 300W power.  
Charge your battery in your car:  
For 24V= current source to 230V~. Your normal car battery charger can be connected to this power source.

Art. Nr. KV3225

### Inspection Camera



This ergonomic hand-held video endoscope with robust, flexible gooseneck is particularly suitable for hard-to-reach places with narrow access (e.g. drilling for safe or vault opening).

#### Technical Information:

Power supply: 4 x 1.5 V AA battery colour display: 5.8 cm / 2.31"  
Display resolution: 960 x 240 Pixel  
Camera resolution: 640 x 480 Pixel resolution: > 30 mm  
Colour sensor: CMOS  
White balance: automatic  
Viewing angle: 54 °  
Camera diameter: 8.0 mm +/- 0.1 mm Lighting: 4x LED  
Min. bending radius: 45 mm  
Gooseneck: 880 mm +/- 2 mm, Ø 6:5 mm  
Operating temperature: 0 – 45°C  
Operating humidity: 15 – 85% RH  
Storage temperature: - 10 – 50°C  
Storage humidity: 15 – 85% RH  
Weight: ca. 315 g

Art. Nr. KV3060-2

## Volk Tool Cases

We have assembled various opening tool cases to suit your needs. With these you are optimally equipped for all situations. You can connect all cases with each other with a unique clamping system, which facilitates transport enormously. Designed so that they can be firmly positioned on top of each other to form a stable stack.

The cases are made of robust ABS plastic to ensure that they are long-lasting tool assistants.

**Our special service makes it possible for you to remove tools you already own from the tool case systems.**



### Tool Case m1

*Unlocked doors and tilted windows*



#### Contents:

- Handbook folder with overview of contents
- Panic Door Opener
- P-wedge Slider
- Yardstick 2 m
- Door Latch Spatula 3-piece Set
- Double Rebate Latch Opener with Handle Ø 1.7mm
- Single Rebate Latch Opener with Handle Ø 1.7mm
- Spiral Opener Blue (large gradient)
- Universal Screwdriver Handle with Bits
- Universal Key Metal / long version
- Maintenance Spray
- Magnet Lifter
- "Open-Up" Latch Opening Card Set
- Cylinder Profile Rod
- Lock Snapper "Steel Claw"
- Plastic Hammer
- Genius Tilt & Turn Window Opener
- Genius Mountain Support
- Door Lever

You can also replace the latch opening needles in Ø 1.5mm.

Art. Nr. KV2072

Size: ca. 480 x 370 x 190 mm

Discontinued model



## Volk Tool Cases



Discontinued model



Art. Nr. KV2073

Size: ca. 480 x 370 x 130 mm

### Tool Case m2 *Destructive, for locked doors*

- Milwaukee M18 FDG Fuel Die Grinder
- Open-end Wrench
- Milwaukee M18 BDD Compact Drill Driver
- 2 Batteries M18 4.0 Ah
- Special Clamping Pliers
- 2 Circular Spring Steel Wires with hold 1mm/1.5mm
- Bell Puller "Tornado" with 1 core pulling plate for profile cylinders
- Open- end Wrench 19 for Bell Puller
- Mandrel with Cutting Disc
- Spare Cutting Disc
- 10 Pull Screws 4.2mm
- 10 Pull Screws 5.5 mm
- Pull Screw Adaptor
- Universal Key short
- Collet 6mm/8mm
- 3 Carbide Rotary Burrs 4x60
- 2 Carbide Rotary Burrs 3x50 (6mm shank)
- 1 Carbide Rotary Burr 6x80
- 1 Carbide Rotary Burr 6x80 for Aluminium
- 1 Carbide Rotary Burr 4x80
- Bellows
- Auxiliary Key for Milling
- 1 Battery charger is supplied loose



Size: ca. 480 x 370 x 130 mm

### Tool Case Supplement m3 *Unlocked Doors*

- Contents:
- Plate Lifter with 3 Square Bolt Knives
  - Door Spy Opener
  - Door Spy Pliers
  - Ratcheting Ring Wrench 17/18
  - Wood Drill for Door Spy
  - Spare Door Spy
  - 3 Extensions for Door Spy
  - 2 Covers for Door Spy
  - 1 Set of Bump Keys

Art. Nr. KV2074

Discontinued model



High quality, in-house production

77

## Volk Tool Cases



### Supplementary Tool Case m4 *Locked and unlocked doors*

Contents:

- Door Latch Slider 20mm
- Latch Opening Needle Container with 10 pre—
- looped spring steel wires
- Pin Drive 6-piece Set
- Latch Opening Card Set - 5-piece mixed
- Latch Opening Card Set with Half Handle - 2-piece
- Bit Box (Set of 28)
- Allen Key Set (Set of 9)
- Pick Set DINO (Set of 7)
- Extractor Set
- Tube High Performance Lubricant
- Lock Lifter Dietrich
- Key Turner Set
- Emergency Set for Broken Latch
- Slotted Screwdriver 1.6 x 10 x 175
- Slotted Screwdriver 1.6 x 8 x 175
- Slotted Screwdriver 1.0 x 5.5 x 125
- Philips Screwdriver 2 x 100
- Slotted Screwdriver 0.4 x 2.5 x 75
- Needle Nose Pliers 200 mm

Discontinued model

Art. Nr. KV2075



Size: ca. 480 x 370 x 130 mm



High quality, in-house production

78

## Volk Tool Cases



### Tool Cases 1-4 *m1 + m2 + m3 + m4*

You save with the complete set and are therefore equipped for over 98% of all key emergency service operations.

The cases can be coupled to each other as required and so are therefore easy to carry in stairwells.

Art. Nr. KV3157



High quality, in-house production

## Volk Tool Cases



Art. Nr. KV3292

The further development of our popular Tool Case S. Extremely robust, water-proof and dust resistant case with automatic pressure equalization valve. For tilted windows, unlocked and locked doors.



Bottom Compartment



Top Compartment



### Compact Tool Case - Premium

Contents:

- Cylinder Profile Rod
- Door Lever
- Plastic hammer
- 16 Combination Wrench
- Special Clamping Pliers
- Universal Key short
- Lock Snapper "Steel Claw"
- Circular Spring Steel Wire 1mm + 1.5mm
- Maintenance and Lubricant Spray
- Heavy Duty Straight Grinder M18 SG
- 1 x 18V/5.0Ah Li-ion Battery
- Battery charger is supplied loose
- 2 Open-end Wrenches
- Mandrel
- 2 Cutting Discs 76x1
- Collet 6mm/8mm
- 2 Carbide Rotary Burrs 3x50 (6mm shank)
- 3 Carbide Rotary Burrs 4x60
- 1 Carbide Rotary Burr 4x80
- 1 Carbide Rotary Burr 6x80
- 1 Carbide Rotary Burr 6x80 for Aluminium
- Bellows
- Fork Tension Tool
- 10 Adhesive Dots
- Cutter Knife
- Bit Box
- "Open-Up" Latch Card for Double Rebate Standard and Window Rebate 0.5mm
- "Open-Up" Latch Opening Card Single Rebate 42mm
- "Open-Up" Latch Opening Card Single Rebate 58mm
- Latch Opening Card Set with Half Handle on Narrow Side
- Magnet Lifter
- Genius Tilt & Turn Window Opener
- Lock Lifter Dietrich
- Panic door opener
- P-wedge Slider
- Spiral Opener
- Door Latch Spatula 20 mm
- Full Latch Opening Needle Set
- Headlamp LedLenser
- Yardstick
- Universal Screwdriver Handle with Additional Bit
- Pick Set Majestic (Set of 13)
- Screwdriver 11 x 3.5 x 200 flat bladed
- Screwdriver 11 x 3.5 x 200 with tip
- Screwdriver 2.5 x 0.4 x 75
- Key Turner Set with Key Turning Aid
- Lock Snapper Attachment
- Extractor Set Majestic
- Volk Handbook
- Non-Restricted Cylinder 30/35
- Non-Restricted Cylinder 40/45
- Non-Restricted Cylinder 50/55

Size: ca. 555 x 428 x 211 mm



High quality, in-house production

## Volk Tool Cases



Art. Nr. KV3398

### Fire Brigade Tool Case

The Fire Brigade Tool Case is perfectly tailored to the real needs of any fire brigade. By reducing the contents, we have created an overseeable case so that firefighters can keep an overview of the situation even in stressful conditions. Extremely robust, waterproof and dust resistant case with automatic pressure equalization valve.



Bottom Compartment



Top Compartment



#### Contents:

- Cylinder Profile Rod
- Door Lever
- Rubber Hammer
- 16 Combination Wrench
- Special Clamping Pliers
- Universal Key short
- Lock Snapper "Steel Claw"
- Circular Spring Steel Wire 1mm + 1.5mm
- Maintenance and Lubrication Spray
- Straight Grinder M18 FDG
- 1 x 18V/5.0Ah Li-ion Battery Charger is supplied loose
- Mandrel
- 2 Cutting Discs 76x1
- Collet 8mm
- 4 Carbide Rotary Burrs 4x60 (6mm shank)
- 1 Carbide Rotary Burr 4x70 (6mm shank)
- 1 Carbide Rotary Burr 6x80
- 1 Carbide Rotary Burr 6x80 for Aluminium
- Bellows
- Fork Tension Tool
- Bit Box
- Latch Opening Card Set with Half Handle on Narrow Side
- Magnet Lifter
- Lock Lifter Dietrich
- Panic Door Opener
- Spiral Opener
- Universal Door Latch Spatula
- Full Latch Opening Needle Set
- Universal Screwdriver Handle with additional bit
- Screwdriver 11 x 3.5 x 200 flat bladed
- Screwdriver 11 x 3.5 x 200 with tip
- Key Turner Set with Key Turning Aid
- Lock Snapper Attachment
- Non-Restricted Cylinder 30/35
- Non-Restricted Cylinder 40/45
- Non-Restricted Cylinder 50/55
- Needle Nose Pliers
- Lock Puller
- Latch Opener for Standard Double Rebate

Size: ca. 555 x 428 x 211 mm



High quality, in-house production

## Volk Tool Cases



Art. Nr. KV3098

### Specialized Tool Case for Pulling and Breaking



Size: ca. 415 x 325 x 112 mm

#### Contents:

- Non-Restricted Cylinder 30/35 and 40/45
- Lock Snapper "Steel Claw"
- Maintenance Spray
- Needle Nose Pliers
- Screwdriver:
  - Phillips 2
  - Slotted 2.5x0.4x75
  - Slotted 5.5x1.0x125
  - Torx 20x125
- Magnet Lifter
- Universal Key short
- Bell Puller "Tornado" with 1 core pulling plate for profile cylinders
- Ratcheting Ring Wrench 17/19
- Pull Screw Adaptor
- 10 Pull Screws 4.2mm
- 20 Pull Screws 5.5mm
- 5 Reinforcing Discs
- 10 Core Pulling Wires

Discontinued model



### Specialized Tool Case for Windows



Size: ca. 415 x 325 x 112 mm

Ideal for fire brigades who work with the following operational tactics: two men at the front door, two men around the house. With this tool case, the outside troop has everything it needs for dealing with tilted windows and windows with incorrectly positioned handles.

#### Contents:

- Genius Tilt & Turn Window Opener
- Opening Aid
- Window Opening Bump Technique - Set

Art. Nr. KV3085

Discontinued model



High quality, in-house production





### Specialized Tool Case for Windows Premium

Art. Nr. KV3314

Ideal for fire brigades who work with the following operational tactics: two men at the front door, two men around the house.

With this tool case, the outside troop has everything it needs for dealing with tilted windows, windows with incorrectly positioned handles and windows that need to be cut to enter.

#### Contents:

- Window Opening Bump Technique - Hammer
- Window Opening Bump Technique - Strike Block
- Genius Tilt & Turn Window Opener
- Opening Aid for Genius Tilt & Turn Window Opener
- Cutter Knife
- Window Cord
- Milwaukee M18 BDD Compact Drill Driver, incl. 2 Batteries M18 4.0 Ah (one of which is supplied loose)
- Charger M12 -18C
- 2X Diamond Coated Hole Saw for Glass 45mm
- Oil can
- 2x Screw Plugs
- 2x Acrylic Drill Guide
- 6x Acrylic Hole Covers
- Safety Goggles for Glass Cutting
- Opening Lever for Window Handles
- Window Handle Cracker
- Threading Wire
- 2x Respirator Masks

Size: ca. 464 x 366 x 176 mm



Bottom



High quality, in-house production



Art. Nr. KV3414

### Caretaker Tool Case

The Caretaker Tool Case is the solution for all minor problems around the grounds. Be it an unlocked door, a ward lock, the bollard in the driveway or a broken key.

Thanks to the generously dimensioned plastic box, additional tools can be stored in the box.

#### Contents:

- 4-piece Wire Set
- Latch Opening Card with Half Handle on Narrow Side
- Latch Opening Card Set - Mixed (2x0.5mm + 3x0.35mm)
- Universal Door Latch Spatula
- Warded Lock Set (Dietrich, Key Turner left + right, - Key Shaft Turner)
- Extractor Set DINO (4 Extractors, 1 Pick, 1 Tension Tool)
- Multi-Function Utility Key
- Triangular Socket Spanner M12
- Plastic Case



Size: ca. 394 x 215 x 195 mm

### Empty Case Premium small

Extremely robust, waterproof and dust resistant hard case with automatic pressure equalization valve. Can stand up to even the toughest handling. You can purchase the case with or without foam inserts.

Size: 464 x 366 x 176 mm



Empty Case Premium small

Art. Nr. KV3341

Foam Layer Insert for Specialized Tool Case for Windows Premium

Art. Nr. KV3342



High quality, in-house production

### Empty Case Premium large



Extremely robust, waterproof and dust resistant hard case with automatic pressure equalization valve. Can stand up to even the toughest handling. You can purchase the case with or without foam inserts.

Size: ca. 555 x 428 x 211 mm

Empty Case Premium large Art. Nr. KV3322

Foam Layer Insert for Compact Tool Case - Premium Art. Nr. KV3323

Foam Layer Insert for Fire Brigade Tool Case Art. Nr. KV3413

### Empty Case small m2/ m3/ m4



You can purchase the case with or without foam inserts. Choose between the foam inserts for the m2/ m3/ m4 case. Simply put away your tools in the case, and you will always have a well-assorted, tidy tool stock. The case is made of robust ABS plastic.

Size: ca. 480 x 370 x 130 mm

Empty Case Art. Nr. KV2078

### Empty Case universal



Customise your own foam inserts. These foam inserts are pre-cut in a 15 mm grid which you can customise to fit your tool. This way you can always keep your tools neatly organized and stowed away. The cases are made of robust ABS plastic to ensure that they are long-lasting tool assistants. Size: ca. 480 x 370 x 130 mm

Supplied with:  
Empty Case small, 2 Foam Inserts

Empty Case with 2 Layer Inserts Art. Nr. KV2091

2 Foam Layer Inserts Without Case Art. Nr. KV2091-S



### Carrying Device



This practical carrying device can help you transport your Tool Case if necessary. Quickly and easily strap it around your tool case for easy carrying. You can also use the carrying device as a knee pad when you need to drill.

Art. Nr. KV3224



### Book „easy picking“



„Easy Picking“ exposes the secrets of lock picking.

- 130 full colour pages
- Easy to understand
- Detailed cut-away drawings
- An excellent training guide
- Practice tips and tricks
- Over 300 pictures and drawings
- Step by step instructions
- Available in 5 European languages

Art. Nr. KV3101

### Tube High Performance Grease



The universal lubricant for all moving metal parts. 50g Tube.

Art. Nr. KV2051

### Rubber Hammer



Art. Nr. KV2053

### Allen Key Set (Set of 9)



Art. Nr. KV2054

### Screw Extractor Set (Set of 5)



A screw that is so stripped that it can no longer rotate in or out can be a problem. This set will help you remove such a screw with ease. First you ream out the hole, and then you clamp a suitable extractor into the power drill. The drill will then be used in reverse or counter-clockwise so the screw can be extracted without any problems.

Art. Nr. KV2087



### Bent Nose Pliers

The gripping or pointed shape of the pliers is very often indispensable in a wide variety of opening.

Art. Nr. KV3084

### Water Pump Pliers with automatic adjustment



These water pump pliers save a lot of trouble: they automatically adjust to the diameter of the object to be clamped so no difficult repositioning by hand is necessary. A patented top class tool for emergency opening.

Art. Nr. KV2080

### Compact Bolt Cutters



Pliers black atramentized, handles with slim multi-component grips.  
Form 2: 20° angled head with joint bar on one side and side cutter for almost flush cutting, with space for gripping.

- Cutting capacity of soft wire: 6.0mm
- Cutting capacity of medium hard wire: 5.2mm
- Cutting capacity of hard wire: 4.0mm
- Cutting capacity of piano wire: 3.6mm
- Total Length: 200mm
- Weight: 360g

Art. Nr. KV3099

### Needle Nose Pliers 200mm



The gripping or pointed shape of the pliers is very often indispensable in a wide variety of opening situations.

Art. Nr. KV2068



### Compact Diagonal Cutter

Diagonal cutters for toughest, demanding conditions, high cutting performance with minimal effort; large elongated cutting edge for thicker cables as well as thin wires.

Art. Nr. KV3227



### Universal Screwdriver Handle



With bits integrated in the handle (all common sizes)

Art. Nr. KV2055



closed

Extra Allen Key 3mm Bit

Art. Nr. KV2055-B



### Maintenance Spray

This spray can be used to help opening tools slide more easily in a gap, but also to care for locking cylinders and locks.  
125ml

Art. Nr. KV2046

### Milwaukee Headlamp HL-LED



- 300 Lumens of TRUEVIEW™ high definition output
- Washable micro fiber sweat-absorbing strap for all day comfort on the head
- Ultra compact and lightweight product
- 6-position tilt adjustment for directing light
- 4 mounting clips for securing to helmets
- Light is protected from impact as well as from weather and dust
- Includes (3) AAA batteries

Battery type: Alkaline (AAA)  
Bulb type: LED  
Max light output: 300/150/25 lumens  
Max. run time: 3/8/31

Art. Nr. KV2093H6



High quality, in-house production



### Splint Driver Set Air-Grip

The new concept in the design of the handles ensures comfortable working when splints have to be driven out, e.g. when dismantling door hinges and fittings.

Art. Nr. KV2058

### Knee Cushion Pad



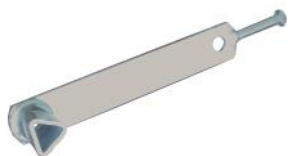
With this comfortable pad, made of hard-wearing special gel, you can protect your knees while milling or other activities.

Art. Nr. KV3155



High quality, in-house production

### Triangular Socket Spanner



Special spanner for unlocking safety bollards and lifting manhole covers.

Triangular M12 Lever length: 19mm  
Length: ca. 250mm

Art. Nr. KV3315



### Bit Box (Set of 28)

In combination with an automatic drill driver you are equipped for all eventualities.

Art. Nr. KV2052



### Earplugs

Reusable

Art. Nr. KV3158

### Screwdriver - Felo

Slotted Screwdriver 2.5 x 0.4 x 75

Art. Nr. KV3108-S1

Philips Screwdriver 2

Art. Nr. KV3108-P2

Slotted Screwdriver 5.5 x 1.0 x 125

Art. Nr. KV3108-S3

Slotted Screwdriver 12 x 2.0 x 200

Art. Nr. KV3108-S4

Screwdriver Complete Set

Art.Nr. KV3108



## Cylinder

Our recommendation for fire brigades: Always carry these three non-restricted replacement cylinder sizes with you to provide greatest possible coverage of all outside doors.

Stay on the safe side and install non-restricted cylinders, which also work with anti-panic locks.

### Non-Restricted Replacement Cylinder for Emergency Use

**Non-Restricted Cylinder 30/35** Art. Nr. KV3235

**Non-Restricted Cylinder 40/45** Art. Nr. KV3236

**Non-Restricted Cylinder 50/55** Art. Nr. KV3237

**Non-Restricted Cylinder Set** Art. Nr. KV3242

### Training cylinder for milling, pulling and breaking

#### Profile Cylinder 30/35

Profile cylinder for practice purposes  
Also suitable for "Pull and break door element".

Art. Nr. KV3114

#### Blind Cylinder

Suitable for use in fire doors and smoke doors

- Suitable for Euro profile cylinders
- Suitable for half cylinders
- 3 in 1: for door thicknesses between 35 - 154 mm
- Certified for T90 doors

Art. Nr. KV3261



High quality, in-house production

95

## Automotive Door Opening

### Suction Cup



With the help of the suction cup attached to the window, you can pull out the car door a little bit to insert an air cushion. And much more.

Art. Nr. KV1011

### Suction Cup - small



Made entirely of rubber to lift and move parts with flat or curved surfaces.

Art. Nr. KV3401

### Air Wedge DINO AIR FIGHTER-P



Push the empty air wedge into the car door gap and pump it up carefully so that you can get through the gap with the opening tools.

Advantages over a "normal" air cushion: Wedge-shaped underside makes it easier to insert rigid materials. It can be inserted into very stable car door gaps with greater force.

Very durable construction - high air pressure use is possible

Art. Nr. KV2092

### Air Wedge DINO AIR FIGHTER-P2



Advantages and usage like AIR FIGHTER P, but with an additional cover, through which the opening tool can be pushed into the car interior, and which reliably prevents the vehicle paint from being scratched.

Art. Nr. KV3062



High quality, in-house production

96



## Automotive Door Opening

### Car Door Claw



The doors of a truck/car or heavy limousine are usually very solid. Instead of using a suction cup to create a first gap, you can use the car door claw with the rubber roller which is gentle on the paint. Dimensions: 225 x 38mm

Art. Nr. KV3006

### Door Wedge Plastic



You have created a door gap with the help of the suction cup and want to keep the gap open and stable to allow you to use your tools. This special device is ideal for this purpose due to its rough surfaces.

Art. Nr. KV2088



### Car Snare Opener L "Boa"

The classic car door opener lets you place the snare around the door knob from the outside. Then you can easily pull up the door knob.

Art. Nr. KV1044



### Car Snare Opener XXL "Python"

This tool can be used to snare car keys on a seat inside the car and then to use a second tool to press down the opening button on the key head. For vehicles with central locking, the doors can then be unlocked.

Art. Nr. KV1014



High quality, in-house production

97

## Automotive Door Opening



### Car Hook Opener "Viper"

For flush-mounted and tapered door knobs. Many car models (e.g. Opel) are protected from being opened because the door knob is tapered. This opener has a pointed hook end that overcomes this obstacle, regardless of the shape of the door knob. With the help of the control cable the tip can be positioned exactly in the correct position.

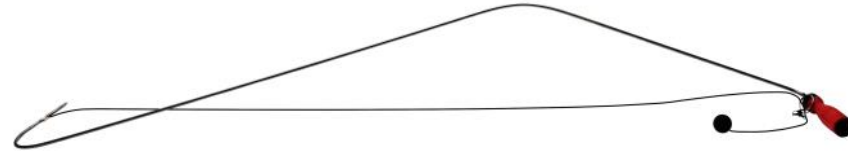
Art. Nr. KV1036



### Car Handle Opener "Natter"

The car to be opened does not have a door knob or it is flush with the door. The door is opened from the inside with a small handle or switch? Then this is exactly the tool you need. The control cable lets you position the hook tip exactly where its needed to lift the handle or switch.

Art. Nr. KV1028



### Car Hook Opener "Cobra"

The car opener consists of a 1.85m long steel pipe with a diameter of 4mm. A stable spring steel wire is fed through the pipe with a hook at its end. A cord is attached to the pipe, which serves to stabilize and guide the pipe. The pipe can be bent according to the requirements, so that a very small door gap is sufficient. For easier carrying, the car hook opener can be unscrewed in the middle.

Art. Nr. KV1029



High quality, in-house production

98

## Automotive Cylinders

### Jiggler Key Set JIG 15



Art. Nr. KV1049

This 15-piece jiggler key set is computer engineered. It was developed based on the technical data of dozens of lock types, with the elimination of impossible locking codes, and the mathematical optimization of the diversity of individual jiggler keys. The jiggler keys are stamped out of 0.8mm flat spring steel of the quality CK101, then deburred and nickel-plated. They enable a high success rate even without lengthy practice. The car tension tool is a useful addition.

### Jiggler Key Set JIG 10



Art. Nr. KV2010

A set of 10 small jiggler keys for opening glass window locking cylinders on car doors.

### Fork Pick for Vehicle Disc Tumbler Locks



Standard Version  
Longer Version

Art. Nr. KV2069  
Art. Nr. KV2069-L



### Tension Tool S for Car Locks

The vehicle cylinder core is pretensioned with this tool.

Art. Nr. KV1037



### Tension Tool Long VS for Flush Mounted Car Locks

Art. Nr. KV3004



### Tension Tool B for Laser Track Car Locks

Art. Nr. KV1038



### Tension Tool Long VS for Flush Mounted Laser Track Car

Art. Nr. KV2011



High quality, in-house production

## Automotive Cylinders

### Car Tension Tool Set



Universal tension tool for automotive locking cylinders with very good tensioning force control properties. Adjustable to different cylinder key opening sizes.

Art. Nr. KV2070



### VAG Inner Groove Pick

Easy to use opening tool for VAG.

Art. Nr. KV3170



### Ford Inner Groove Pick

Easy to use opening tool for Ford.

Art. Nr. KV3268



### Mercedes Benz Inner Groove Pick

Easy to use opening tool, for Mercedes Benz.

Art. Nr. KV3352



### BMW Inner Groove Pick

Easy to use opening tool for BMW.

Art. Nr. KV3258



### Super Tool VAG HU66 V.3

2 in 1 tool for opening and decoding vehicle cylinders.

Art. Nr. KV3353



### Super Tool HU92 (+15) V.3

2 in 1 tool for opening and decoding vehicle cylinders.

Art. Nr. KV3354



High quality, in-house production



## Compressed Air Cylinder Transport Container

For safe storage of bottles during transport. The open design makes it easy to place or remove the compressed air cylinders from the transport rack. Transport container made of galvanised steel. With two folding handles.



- Accommodation for max. 4 CFK compressed air cylinders 6.8 or 6l/300bar.
- Size (ThxWxH): 375x350x670mm
- Weight: ca. 9.8 kg (without cylinders)

Art. Nr. KV3052-4K



- Can accommodate up to 4 compressed air cylinders 6l/300bar (steel cylinders).
- Size (ThxWxH): 340x320x665mm
- Weight: ca. 9.5 kg (without cylinders)

Art. Nr. KV3052-4G



- Accommodation for max. 6 CFK-Compressed air cylinders 4l/200 bar (steel cylinders).
- Size (ThxWxH): 415x265x650mm
- Weight: ca. 9.5 kg (without cylinders)

Art. Nr. KV3052-6



## Compressed Air Cylinder Transport Container "Volk System"

- Basic element is designed for 2 bottles, with two folding carrying handles and an upper carrying handle.
- 4 bottles in 2 basic elements can be carried comfortably by one person using the upper handles.
- Basic elements can be coupled to groups of any size with hinged pin safety device. The bottle size can be varied.
- Plastic foam-supported bottles are stored silently and absolutely safely in these sturdy yet light, shapely, red powder-coated containers.

The compressed air cylinder transport system can be manufactured individually according to customer requirements. For example for Interspiro composite bottles or special sizes of respiratory air tanks for special units or similar.

Size (ThxWxH): 400x220x710mm Weight: 6.7 kg  
Inner diameter of the foam: 166mm

Art. Nr. KV3051-166

Size (ThxWxH): 400x220x710mm Weight: 6.7 kg  
Inner diameter of the foam: 142mm

Art. Nr. KV3051-142



Size (ThxWxH): 400x220x710mm Weight: 6.7 kg  
Inner diameter of the foam: 158mm

Art. Nr. KV3051-158

### Coupling System



## Training Devices



### Wood Door - Single Rebate

With this sturdy training door you can try out different opening techniques. The training door requires little space and is attached to the table with screw clamps.

Size: 470x200x620mm

Art. Nr. KV3102

Longer delivery time may be possible!



### Wood Door - Butt Wrap

With this sturdy training door you can try out different opening techniques. The training door requires little space and is attached to the table with screw clamps.

Size: 470x200x620mm

Art. Nr. KV3165

Longer delivery time may be possible!



### Wood Door - Standard Double Rebate

With this sturdy training door you can try out different opening techniques. The training door requires little space and is attached to the table with screw clamps.

Size: 470x200x620mm

Art. Nr. KV3103

Longer delivery time may be possible!



## Training Devices



### Wood Door Double Rebate/Window Rebate

With this sturdy training door you can try out different opening techniques. The training door requires little space and is attached to the table with screw clamps.

Size: 470x200x620mm

Art. Nr. KV3104

Longer delivery time may be possible!



### Metal Door - Standard Single Rebate

With this sturdy training door you can try out different opening techniques. The training door requires little space and is attached to the table with screw clamps.

Size: 450x250x550mm

Art. Nr. KV3105

Longer delivery time may be possible!



### Metal Door - Single Rebate with Thermal Break

With this sturdy training door you can try out different opening techniques. The training door requires little space and is attached to the table with screw clamps.

Size: 450x550x250mm

Art. Nr. KV3106

Longer delivery time may be possible!



## Training Devices



### Door Element "Destructive Opening"

With this sturdy training door you can try out different opening techniques, such as milling, core pulling, drilling, picking and breaking.  
The training door requires little space and is attached to the table with screw clamps.  
Size: 530x320x170mm

Art. Nr. KV3097

Longer delivery time may be possible!



### Model Window

With this training window you can try out different opening techniques and tools. The training window is delivered without glass and is attached to the table with screw clamps.

**Please take note:**

Longer delivery time may be possible!  
Higher shipping and packing costs, as shipping is carried out exclusively by forwarding agent!  
Alternatively: Customer-pick up

Standard  
Art. Nr. KV3107-S

Rounded  
Art. Nr. KV3107-G

Press Button  
Art. Nr. KV3107-D



High quality, in-house production

## Training

### Opening Training Courses

Visit our hands-on technical training courses. You will receive a richly illustrated and detailed training folder along with a final certificate.  
A large seminar room in our house offers optimal possibilities to learn and test the techniques. Our special service - we will drive to your facilities and train you on site. This will save you time, travel and accommodation costs.

We provide training throughout Germany, Austria and Switzerland.

Please call: (Germany) 0049-751-6527-3810 to make an appointment or  
contact the organizers who booked us. You will find all dates at [www.volk-sicherheitstechnik.de](http://www.volk-sicherheitstechnik.de)

Our rooms in Ravensburg in the South of Germany



External Training Courses at Customer Facilities





## Training Courses

### Basic Opening Techniques - Training Course

In this seminar the participants will learn basic, frequently applied opening techniques and will also receive an overview of rare procedures. Comprehensive, technically qualified information is supplemented by numerous tips from our 28 years of lock opening experience.

More information at [www.volk-sicherheitstechnik.de](http://www.volk-sicherheitstechnik.de) or by calling: (Germany) 0049-751-6527-3810

### Practical Training Courses - Opening Techniques

This advanced seminar is open to all participants of our BASIS seminar. The focus lies on intensive practical training and application of the opening techniques introduced. In addition, we teach non-destructive opening techniques for locked doors.

More information at [www.volk-sicherheitstechnik.de](http://www.volk-sicherheitstechnik.de) or by calling: (Germany) 0049-751-6527-3810

### Advanced Training Course Opening Techniques

In this special seminar, the mechanical operation of a locking cylinder is explained with even more demonstration. The participants disassemble a cylinder into its individual parts and then reassemble it. These must be repinned by the participants themselves. The highlight will be to show participants how cylinders of the highest security class such as EVVA 3KS, DOM Diamant, BKS Janus and Keso can be broken open very quickly. Anyone who registers for this seminar must have attended our BASIS seminar and present a police clearance certificate.

More information at [www.volk-sicherheitstechnik.de](http://www.volk-sicherheitstechnik.de) or by calling: (Germany) 0049-751-6527-3810

### Fire Brigade Opening Techniques - Training Course

Essentially, this seminar is a mixture of our basic and practical seminar, but tailored to the actual requirements of the fire brigades. Every participant gets the opportunity to practice all important techniques.

More information at [www.volk-sicherheitstechnik.de](http://www.volk-sicherheitstechnik.de) or by calling: (Germany) 0049-751-6527-3810

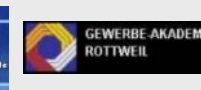
## Payment/Shipping

Shipping costs:	Germany:	For orders up to € 600 we charge: Up to 1 kg = € 4.95 Up to 30 kg = € 5.60 Up to 40 kg = € 11.30  For orders over € 600 we charge: Up to 1 kg = €8.90 Up to 30 kg = € 8.90 Up to 40 kg = € 13.95 For orders over € 2500 we charge additional costs for transport insurance.
	Abroad:	Shipping costs abroad are calculated according to the value and weight of the goods.
Delivery:		The ordered goods will be shipped on the same day if the order is received by 10 am. We will inform you of any delays in delivery.
Terms of payment:		First-time customers must pay for the first order in advance. For authorities, municipalities and existing customers we send on account.

## Opening windows, doors and cars

**quick - safe - careful**

We partner with:



Volk Safety Equipment

Albersfelder Str. 8

88213 Ravensburg Germany

Tel.: 0049-751-652 738 -10

Fax.: 0049-751-652 738 -30

Mobile: 0049-171-2621784

[www.volk-sicherheitstechnik.de](http://www.volk-sicherheitstechnik.de)

[mail@volk-sicherheitstechnik.de](mailto:mail@volk-sicherheitstechnik.de)



Well-priced

Practical

Goal-oriented

Successful

Efficient

Effective

